

MOUSE GUCY2C PROTEIN, HIS TAG**Cat.#:** 12209**Product Name:** Mouse GUCY2C Protein**Size:** 10 µg, 50 µg and 100 µg**Synonyms:** Gcc;GC-C**Target:** GUCY2C**UNIPROT ID:** Q3UWA6**Description:** Recombinant mouse GUCY2C protein with C-terminal 6xHis tag**Background:** Enables guanylate cyclase activity. Acts upstream of or within regulation of cell population proliferation and response to toxic substance. Predicted to be located in endoplasmic reticulum and membrane. Predicted to be integral component of membrane. Predicted to be active in plasma membrane. Is expressed in alimentary system and liver. Used to study abdominal obesity-metabolic syndrome and obesity. Human ortholog(s) of this gene implicated in congenital diarrhea 6. Orthologous to human GUCY2C (guanylate cyclase 2C). [provided by Alliance of Genome Resources, Apr 2022]**Species/Host:** HEK293**Molecular Weight:** The protein has a predicted molecular mass of 47.9 kDa after removal of the signal peptide. The apparent molecular mass of mGUCY2C-His is approximately 55-130 kDa due to glycosylation.**Molecular Characterization:** Mouse GUCY2C(Val20-Met433) 6×His tag**Purity:** The purity of the protein is greater than 85% as determined by SDS-PAGE and Coomassie blue staining.**Formulation & Reconstitution:** Lyophilized from nanodisc solubilization buffer (20 mM Tris-HCl, 150 mM NaCl, pH 8.0). Normally 5% – 8% trehalose is added as protectants before lyophilization.**Storage & Shipping:** Store at -20°C to -80°C for 12 months in lyophilized form. After reconstitution, if not intended for use within a month, aliquot and store at -80°C (Avoid repeated freezing and thawing). Lyophilized proteins are shipped at ambient temperature.

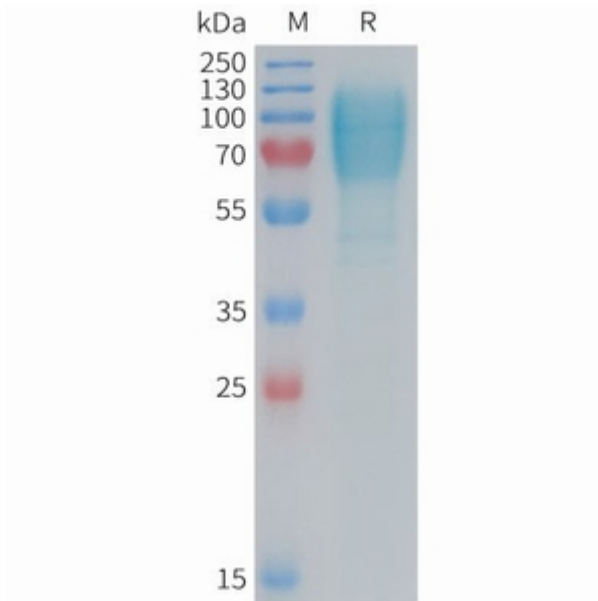


Figure 1. Mouse GUCY2C Protein, His Tag on SDS-PAGE under reducing condition.