

MOUSE PD-L1 PROTEIN, HFC TAG

Cat.#: 12199

Product Name: Mouse PD-L1 Protein

Size: 10 µg, 50 µg and 100 µg

Synonyms: B7h1;Pd11;Pdcd111;Pdcd11g1;A530045L16Rik

Target: PD-L1

UNIPROT ID: Q9EP73

Description: Recombinant mouse PD-L1 protein with C-terminal human Fc tag

Background: The protein encoded by this gene is an immune inhibitory receptor ligand that is expressed by hematopoietic and non-hematopoietic cells, such as T cells and B cells and various types of tumor cells. The encoded protein is a type I transmembrane protein that has immunoglobulin V-like and C-like domains. Interaction of this ligand with its receptor inhibits T-cell activation and cytokine production. During infection or inflammation of normal tissue, this interaction is important for preventing autoimmunity by maintaining homeostasis of the immune response. In tumor microenvironments, this interaction provides an immune escape for tumor cells through cytotoxic T-cell inactivation. Mice deficient for this gene display a variety of phenotypes including decreased allogeneic fetal survival rates and severe experimental autoimmune encephalomyelitis. [provided by RefSeq, Sep 2015]

Species/Host: HEK293

Molecular Weight: The protein has a predicted molecular mass of 50.8 kDa after removal of the signal peptide. The apparent molecular mass of mPD-L1-hFc is approximately 55-100 kDa due to glycosylation.

Molecular Characterization: Mouse PD-L1(Phe19-Arg237) hFc(Glu99-Ala330)

Purity: The purity of the protein is greater than 95% as determined by SDS-PAGE and Coomassie blue staining.

Formulation & Reconstitution: Lyophilized from nanodisc solubilization buffer (20 mM Tris-HCl, 150 mM NaCl, pH 8.0). Normally 5% – 8% trehalose is added as protectants before lyophilization.

Storage & Shipping: Store at -20°C to -80°C for 12 months in lyophilized form. After reconstitution, if not intended for use within a month, aliquot and store at -80°C (Avoid repeated freezing and thawing). Lyophilized proteins are shipped at ambient temperature.

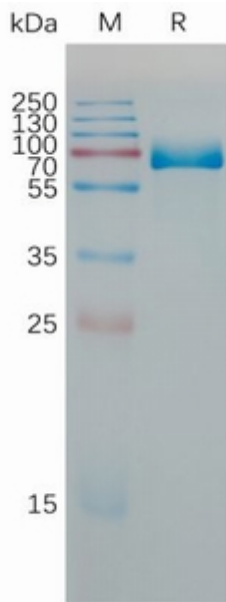


Figure 1. Mouse PD-L1 Protein, hFc Tag on SDS-PAGE under reducing condition.