

MUC1 (DMC493) IGG1 CHIMERIC MAB**Cat.#:** 28266**Product Name:** Anti-MUC1(DMC493) IgG1 Chimeric Monoclonal Antibody**Synonyms:** ADMCKD; ADMCKD1; CA 15-3; CD227; EMA; H23AG; KL-6; MAM6; MCD; MCKD; MCKD1; MUC-1; MUC-1/SEC; MUC-1/X; MUC1/ZD; PEM; PEMT; PUM**Description:** Anti-MUC1 antibody(DMC493) IgG1 Chimeric Monoclonal Antibody

Background: This gene encodes a membrane-bound protein that is a member of the mucin family. Mucins are O-glycosylated proteins that play an essential role in forming protective mucous barriers on epithelial surfaces. These proteins also play a role in intracellular signaling. This protein is expressed on the apical surface of epithelial cells that line the mucosal surfaces of many different tissues including lung; breast stomach and pancreas. This protein is proteolytically cleaved into alpha and beta subunits that form a heterodimeric complex. The N-terminal alpha subunit functions in cell-adhesion and the C-terminal beta subunit is involved in cell signaling. Overexpression; aberrant intracellular localization; and changes in glycosylation of this protein have been associated with carcinomas. This gene is known to contain a highly polymorphic variable number tandem repeats (VNTR) domain. Alternate splicing results in multiple transcript variants.

Applications: Flow Cyt**Recommended Dilutions:** Flow Cyt 1:100**Host Species:** Rabbit**Isotype:** Rabbit:Human Fc chimeric IgG1**Purification:** Purified from cell culture supernatant by affinity chromatography**Species Reactivity:** Human MUC1**Constituents:** Lyophilized from sterile PBS, pH 7.4. 5 % – 8% trehalose is added as protectants before lyophilization.**Storage & Shipping:** Store at -20°C to -80°C for 12 months in lyophilized form. After reconstitution, if not intended for use within a month, aliquot and store at -80°C (Avoid repeated freezing and thawing).

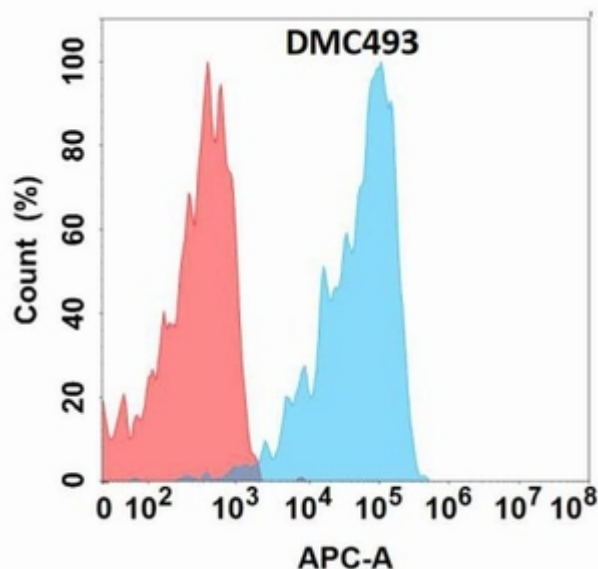


Figure 1. Flow cytometry analysis with Anti-MUC1 (DMC493) on Expi293 cells transfected with human MUC1 (Blue histogram) or Expi293 transfected with irrelevant protein (Red histogram).