

NFE2L2 MAB**NFE2L2 Monoclonal****Cat. #:** 26358**Gene Symbol:** NFE2L2, NRF2**Description:** Anti-NFE2L2 Mouse Monoclonal Antibody

Background: NFE2L2 protein is encoded by NFE2L2 gene. It is a basic leucine zipper protein that regulates the expression of antioxidant proteins that protect against oxidative damage triggered by injury and inflammation. Several drugs that stimulate the NFE2L2 pathway are being studied for treatment of diseases that are caused by oxidative stress.

Immunogen: Recombinant full length protein of NFE2L2**Applications:** ELISA, WB, IF, IHC**Recommended Dilutions:**

ELISA: 1:1000–1:2000

WB: 1:500–1:1000

IF: 1:50–1:100

IHC: 1:10–1:100

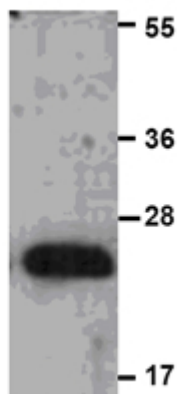
Concentration: 1 mg/ml**Host Species:** Mouse**Format:** Liquid**Clonality:** Monoclonal**Isotype:** IgG**Purity:** Purified from ascites**Preservative:** No

Constituents: PBS (without Mg^{2+} and Ca^{2+}), pH 7.4, 150 mM NaCl, 50% glycerol

Species Reactivity: Recognizes wild type NFE2L2 protein of vertebrates.**Storage Conditions:** Store at $-20^{\circ}C$. Avoid repeated freezing and thawing

Western blot:

NFE2L2 protein

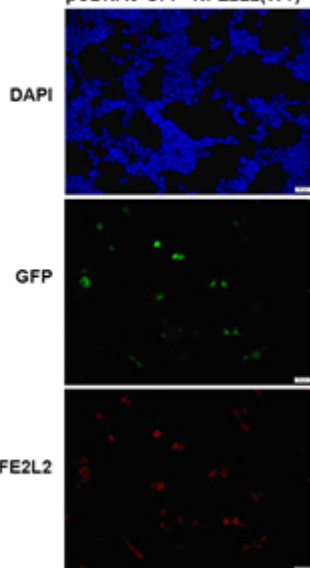


WB: anti-NFE2L2 WT mAb

Western blot analysis of recombinant NFE2L2 protein. Purified His-tagged NFE2L2 protein was blotted with Anti-NFE2L2 monoclonal antibody (Cat. #26358).

Immunofluorescence:

pCDNA3-GFP- NFE2L2(WT)



Immunofluorescence of cells expressing NFE2L2 protein with Anti-NFE2L2 antibody. HEK293T cells were transfected with pCDNA3-GFP-NFE2L2 (WT) plasmid, then fixed and stained with Anti-NFE2L2 monoclonal antibody (Cat. #26358).