

## NFE2L2(L30F)

### NFE2L2(L30F)

**Cat. #:** 26332

**Gene Symbol:** NFE2L2, NRF2

**Description:** Anti-NFE2L2(L30F) Mouse Monoclonal Antibody

**Background:** NFE2L2 protein is encoded by NFE2L2 gene. It is a basic leucine zipper protein that regulates the expression of antioxidant proteins that protect against oxidative damage triggered by injury and inflammation. Several drugs that stimulate the NFE2L2 pathway are being studied for treatment of diseases that are caused by oxidative stress.

**Immunogen:** A synthetic peptide from the internal region of NFE2L2 which includes the mutation of L30F, human origin.

**Applications:** ELISA, WB, IHC

**Recommended Dilutions:**

ELISA: 1:1000–1:2000

WB: 1:500–1:1000

IHC: 1:50–1:100

**Concentration:** 1 mg/ml

**Host Species:** Mouse

**Format:** Liquid

**Clonality:** Monoclonal

**Isotype:** IgG

**Purity:** Purified from ascites

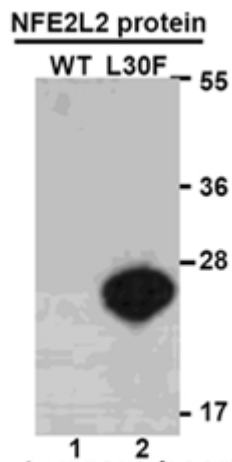
**Preservative:** No

**Constituents:** PBS (without  $Mg^{2+}$  and  $Ca^{2+}$ ), pH 7.4, 150 mM NaCl, 50% glycerol

**Species Reactivity:** Recognizes L30F mutant, but not wild type NFE2L2 of vertebrates.

**Storage Conditions:** Store at  $-20^{\circ}C$ . Avoid repeated freezing and thawing

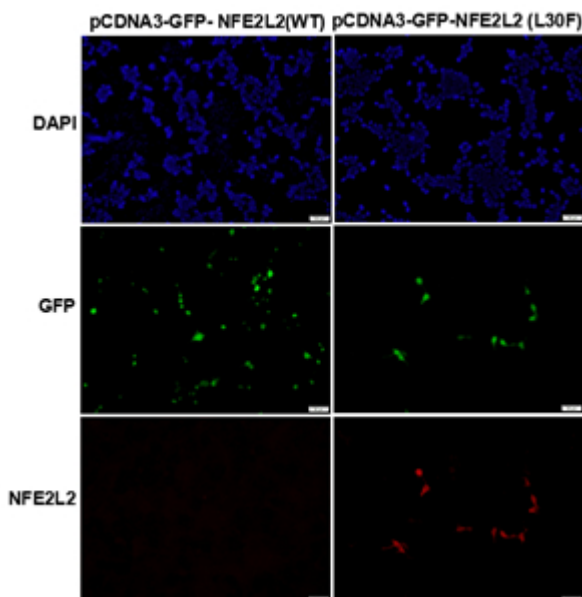
## Western blot:



WB: anti-NFE2L2 (L30F) mAb

Western blot analysis of recombinant NFE2L2(L30F) and wild type proteins. Purified His-tagged NFE2L2(L30F) protein (lane2) and corresponding wild type protein (lane1) were blotted with Anti-NFE2L2(L30F) monoclonal antibody (Cat. #26332).

## Immunofluorescence:



Immunofluorescence of cells expressing NFE2L2 proteins with Anti-NFE2L2(L30F) antibody. HEK293T cells were transfected with pCDNA3-GFP-NFE2L2 (WT) plasmid (left column) or pCDNA3-GFP-NFE2L2(L30F) plasmid (right column), then fixed and stained with Anti-NFE2L2(L30F) monoclonal antibody (Cat. #26332).