

NKG2A (DMC298) IGG1 CHIMERIC MAB**Cat.#:** 28197**Product Name:** Anti-NKG2A(DMC298) IgG1 Chimeric Monoclonal Antibody**Synonyms:** CD159A; NKG2; NKG2A**Description:** Anti-NKG2A antibody(DMC298) IgG1 Chimeric Monoclonal Antibody

Background: Natural killer (NK) cells are lymphocytes that can mediate lysis of certain tumor cells and virus-infected cells without previous activation. They can also regulate specific humoral and cell-mediated immunity. The protein encoded by this gene belongs to the killer cell lectin-like receptor family; also called NKG2 family; which is a group of transmembrane proteins preferentially expressed in NK cells. This family of proteins is characterized by the type II membrane orientation and the presence of a C-type lectin domain. This protein forms a complex with another family member; KLRD1:CD94; and has been implicated in the recognition of the MHC class I HLA-E molecules in NK cells. The genes of NKG2 family members form a killer cell lectin-like receptor gene cluster on chromosome 12. Multiple alternatively spliced transcript variants encoding distinct isoforms have been observed.

Applications: Flow Cyt**Recommended Dilutions:** Flow Cyt 1:100**Host Species:** Rabbit**Isotype:** Rabbit:Human Fc chimeric IgG1**Purification:** Purified from cell culture supernatant by affinity chromatography**Species Reactivity:** Human NKG2A**Constituents:** Lyophilized from sterile PBS, pH 7.4. 5 % – 8% trehalose is added as protectants before lyophilization.**Storage & Shipping:** Store at -20°C to -80°C for 12 months in lyophilized form. After reconstitution, if not intended for use within a month, aliquot and store at -80°C (Avoid repeated freezing and thawing).

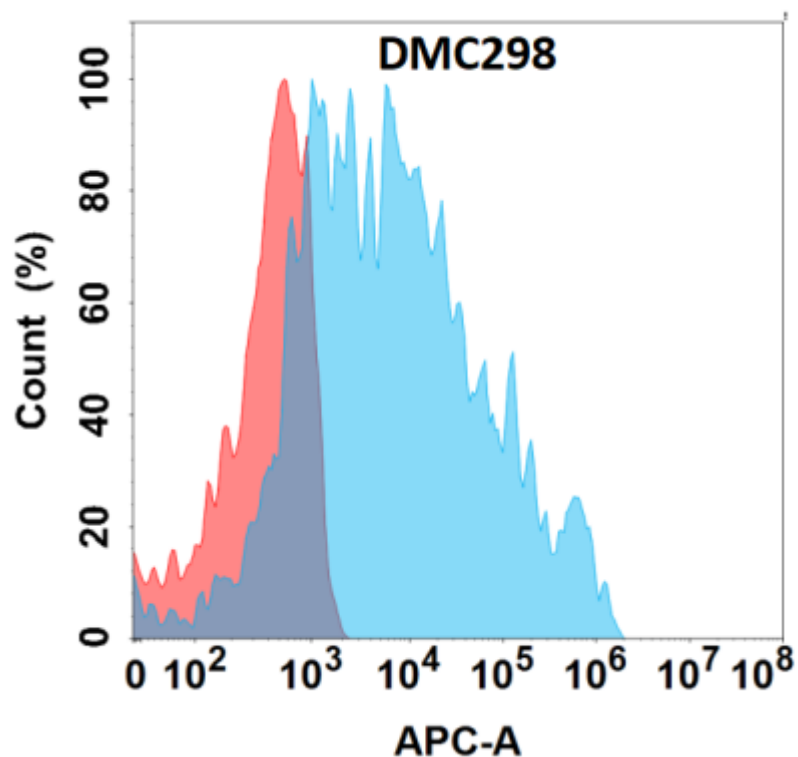


Figure 1. Flow cytometry analysis with Anti-NKG2A (DMC298) on Expi293 cells transfected with human NKG2A (Blue histogram) or Expi293 transfected with irrelevant protein (Red histogram).