

NKG2D (DMC287) IGG1 CHIMERIC MAB**Cat.#:** 28195**Product Name:** Anti-NKG2D(DMC287) IgG1 Chimeric Monoclonal Antibody**Synonyms:** NKG2D;CD314;KLRK1;NK cell receptor D**Description:** Anti-NKG2D antibody(DMC287) IgG1 Chimeric Monoclonal Antibody

Background: Natural killer (NK) cells are lymphocytes that can mediate lysis of certain tumor cells and virus-infected cells without previous activation. They can also regulate specific humoral and cell-mediated immunity. NK cells preferentially express several calcium-dependent (C-type) lectins; which have been implicated in the regulation of NK cell function. The NKG2 gene family is located within the NK complex; a region that contains several C-type lectin genes preferentially expressed in NK cells. This gene encodes a member of the NKG2 family. The encoded transmembrane protein is characterized by a type II membrane orientation (has an extracellular C terminus) and the presence of a C-type lectin domain. It binds to a diverse family of ligands that include MHC class I chain-related A and B proteins and UL-16 binding proteins; where ligand-receptor interactions can result in the activation of NK and T cells. The surface expression of these ligands is important for the recognition of stressed cells by the immune system; and thus this protein and its ligands are therapeutic targets for the treatment of immune diseases and cancers. Read-through transcription exists between this gene and the upstream KLRC4 (killer cell lectin-like receptor subfamily C; member 4) family member in the same cluster.

Applications: Flow Cyt**Recommended Dilutions:** Flow Cyt 1:100**Host Species:** Rabbit**Isotype:** Rabbit:Human Fc chimeric IgG1**Purification:** Purified from cell culture supernatant by affinity chromatography**Species Reactivity:** Human NKG2D**Constituents:** Lyophilized from sterile PBS, pH 7.4. 5 % – 8% trehalose is added as protectants before lyophilization.**Storage & Shipping:** Store at -20°C to -80°C for 12 months in lyophilized form. After reconstitution, if not intended for use within a month, aliquot and store at -80°C (Avoid repeated freezing and thawing).

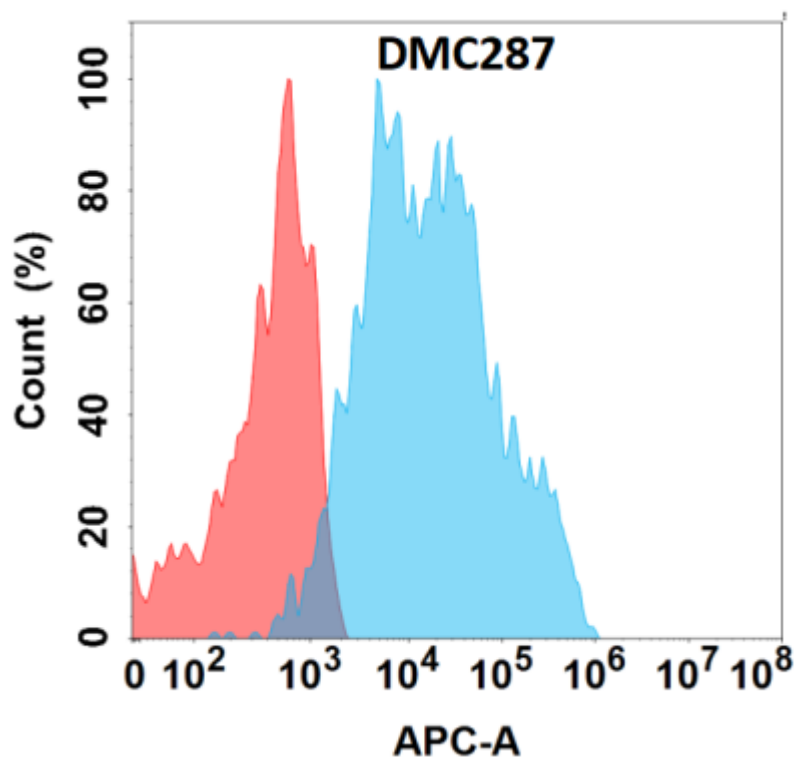


Figure 1. Flow cytometry analysis with Anti-NKG2D (DMC287) on Expi293 cells transfected with human NKG2D (Blue histogram) or Expi293 transfected with irrelevant protein (Red histogram).