

NKP30 (DM88) RABBIT MAB

Cat.#: 28417

Product Name: Anti-NKp30(DM88) Rabbit Monoclonal Antibody

Synonyms: NCR3;CD337;NKp30;IC7;LY117;MALS

Description: Anti-NKp30 antibody(DM88) Rabbit Monoclonal Antibody

Background: The protein encoded by this gene is a natural cytotoxicity receptor (NCR) that may aid NK cells in the lysis of tumor cells. The encoded protein interacts with CD3-zeta (CD247); a T-cell receptor. A single nucleotide polymorphism in the 5' untranslated region of this gene has been associated with mild malaria susceptibility. Three transcript variants encoding different isoforms have been found for this gene.

Applications: ELISA; Flow Cyt

Recommended Dilutions: ELISA 1:5000-10000; Flow Cyt 1:100

Host Species: Rabbit

Isotype: Rabbit IgG

Purification: Purified from cell culture supernatant by affinity chromatography

Species Reactivity: Human NKp30

Constituents: Lyophilized from sterile PBS, pH 7.4. 5 % - 8 % trehalose is added as protectants before lyophilization.

Storage & Shipping: Store at -20°C to -80°C for 12 months in lyophilized form. After reconstitution, if not intended for use within a month, aliquot and store at -80°C (Avoid repeated freezing and thawing).

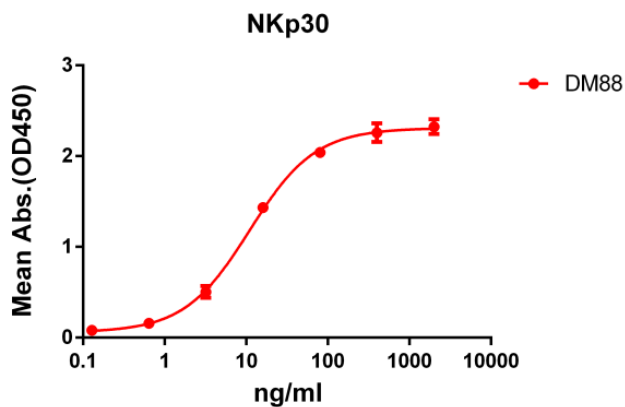


Figure 1. ELISA plate pre-coated by 2 µg/ml (100 µl/well) Human NKp30 protein, hFc tagged protein 11201 can bind Rabbit anti-NKp30 monoclonal antibody (clone: DM88) in a linear range of 1-100 ng/ml.

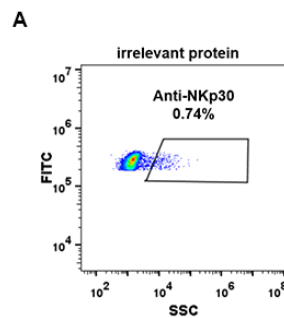


Figure 2. Expi 293 cell line transfected with irrelevant protein (A) and human NKp30 (B) were surface stained with Rabbit anti-NKp30 monoclonal antibody 15µg/ml (clone: DM88) followed by Alexa 488-conjugated anti-rabbit IgG secondary antibody.