

NOTCH1(M2011R)**NOTCH1(M2011R)****Cat. #:** 26444**Size:** 100 µL**Gene Symbol:** NOTCH1, AOS5, AOVD1, TANI, hN1**Description:** Anti-NOTCH1(M2011R) Mouse Monoclonal Antibody**Background:** NOTCH1 is a human gene encoding a single-pass transmembrane receptor. It is a member of the NOTCH family. NOTCH family members play a role in a variety of developmental processes by controlling cell fate decisions. Diseases associated with NOTCH1 include aortic valve disease 1 and adams-oliver syndrome 5, and so on. An important paralog of this gene is NOTCH2.**Immunogen:** A synthetic peptide from the internal region of NOTCH1 which includes the mutation of M2011R, human origin.**Applications:** ELISA, WB, IF, IHC**Recommended Dilutions:**

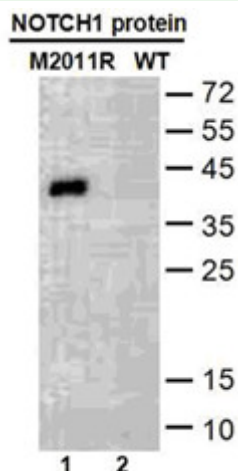
ELISA: 1:1000-1:2000

WB: 1:500-1:1000

IF: 1:50-1:100

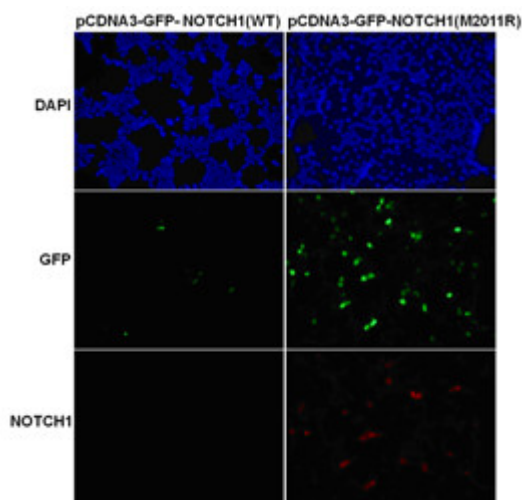
IHC: 1:50-1:100

Concentration: 1 mg/ml**Host Species:** Mouse**Format:** Liquid**Clonality:** Monoclonal**Isotype:** IgG**Purity:** Purified from ascites**Preservative:** No**Constituents:** PBS (without Mg²⁺ and Ca²⁺), pH 7.4, 150 mM NaCl, 50% glycerol**Species Reactivity:** Recognizes M2011R mutant, but not wild type NOTCH1 of vertebrates.**Storage Conditions:** Store at -20°C. Avoid repeated freezing and thawing



Western blot: WB: anti-NOTCH1 (M2011R) mAb

Western blot analysis of recombinant NOTCH1(M2011R) and wild type proteins. Purified His-tagged NOTCH1(M2011R) protein (lane1) and corresponding wild type protein (lane2) were blotted with Anti-NOTCH1(M2011R) monoclonal antibody (Cat. #26444).



Immunofluorescence:

Immunofluorescence of cells expressing NOTCH1 proteins with Anti-NOTCH1(M2011R) antibody. HEK293T cells were transfected with pCDNA3-GFP-NOTCH1 (WT) plasmid (left column) or pCDNA3-GFP-NOTCH1(M2011R) plasmid (right column), then fixed and stained with Anti-NOTCH1(M2011R) monoclonal antibody (Cat. #26444).