

## CD20 MAB (OBINUTUZUMAB)

**Cat.#:** 28152

**Product Name:** Anti-CD20 (Obinutuzumab) Monoclonal Antibody

**Synonyms:** B1;Bp35;MS4A1;CVID5;LEU-16;MS4A2;S7

**Description:** Anti-CD20 (obinutuzumab ) Monoclonal Antibody

**Background:** Research grade biosimilar. Not for use in therapeutic or diagnostic procedures for humans or animals.

**Applications:** Flow Cyt

**Recommended Dilutions:** Flow Cyt 1:100

**Host Species:** Humanized

**Isotype:** IgG1(E239D, M241L)

**Purification:** Purified from cell culture supernatant by affinity chromatography

**Species Reactivity:** Human CD20

**Constituents:** Lyophilized from sterile PBS, pH 7.4. 5 % – 8% trehalose is added as protectants before lyophilization.

**Storage & Shipping:** Store at  $-20^{\circ}\text{C}$  to  $-80^{\circ}\text{C}$  for 12 months in lyophilized form. After reconstitution, if not intended for use within a month, aliquot and store at  $-80^{\circ}\text{C}$  (Avoid repeated freezing and thawing).

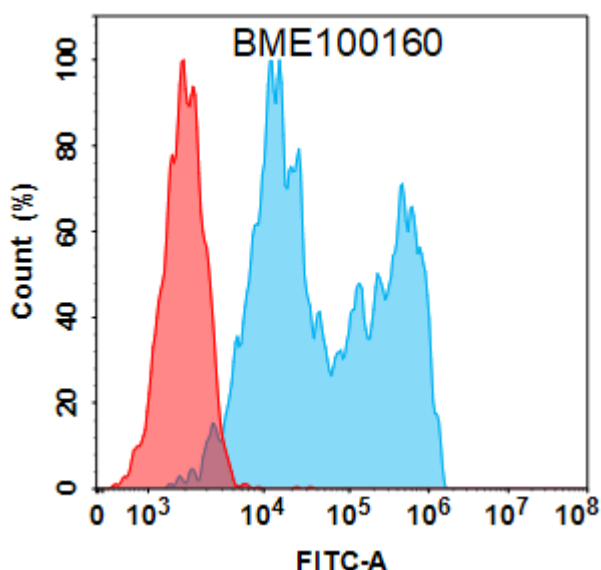


Figure 1. Flow cytometry analysis with 2  $\mu\text{g}/\text{mL}$  Anti-CD20 (obinutuzumab biosimilar) mAb (28152) on Expi293 cells transfected with Human CD20 protein (Blue histogram) or Expi293 transfected with irrelevant protein (Red histogram).



# Product Description

Pioneering GTPase and Oncogene Product Development since 2010

---