

ORAI1-L1 PAB**Orail-L1 Polyclonal Antibody****Cat. #:** 21001**Gene Symbol:** Orail**Description:** Anti-Orail-L1 Rabbit Polyclonal Antibody

Background: Store-operated calcium channels (SOCs) play essential functions in various physiological processes. Orail (also named CRACM1) is a critical molecular component of SOCs. Orail protein is a ~35 kDa plasma membrane protein with 4 transmembrane domains. Human patients with a severe combined immunodeficiency (SCID) syndrome possess point mutations in Orail gene.

Immunogen: A peptide from the extracellular loop 1 region of human Orail

Applications: ELISA, WB, IHC

Recommended Dilutions:

ELISA: 1:1000–1:5000,

WB: 1:1000–1:2000,

IHC: 1:100–1:200

Concentration:

Host Species: Rabbit

Format: Liquid

Clonality: Polyclonal

Isotype: IgG

Purity: Immunogen affinity purified

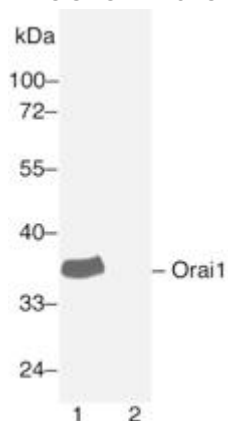
Preservative: No

Constituents: 50 mM NaHCO₃-Glycine, 0.15M NaCl, pH7.4

Species Reactivity: Orail-L1 antibody recognizes Orail from human and mouse. It may also recognize Orail2 and Orail3.

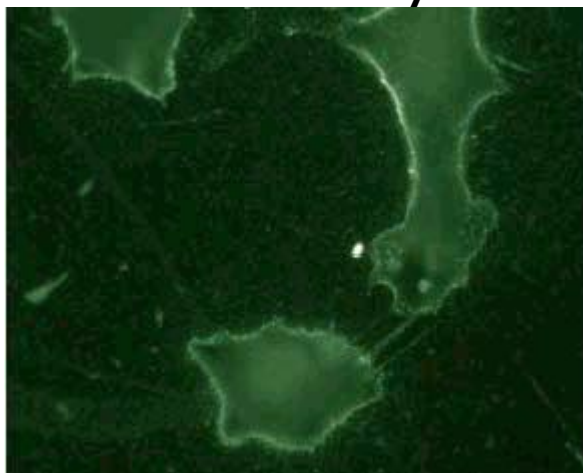
Storage Conditions: Store at -20°C. Avoid repeated freezing and thawing

Western blot:



Western blot analysis of Orail protein. Human Orail plasmid DNA was transiently transfected into HEK-293 cells. Whole-cell lysate was used for western blot in the absence (lane 1) or presence (lane 2) of antigen peptide.

Immunohistochemistry:



Immunohistochemistry of endogenous Orail in NIH3T3 cells showing the plasma membrane staining.