

ORAI1-L2 PAB**Orail-L2 Polyclonal Antibody****Cat. #:** 21002**Gene Symbol:** Orail**Description:** Anti-Orail-L2 Rabbit Polyclonal Antibody

Background: Store-operated calcium channels (SOCs) play essential functions in various physiological processes. Orail (also named CRACM1) is a critical molecular component of SOCs. Orail protein is a ~35 kDa plasma membrane protein with 4 transmembrane domains. Human patients with a severe combined immunodeficiency (SCID) syndrome possess point mutations in Orail gene.

Immunogen: A peptide from the extracellular loop 2 region of human Orail

Applications: ELISA, WB

Recommended Dilutions:

ELISA: 1:1000-1:5000,

WB: 1:1000-1:2000,

IHC: 1:100-1:200

Concentration:

Host Species: Rabbit

Format: Liquid

Clonality: Polyclonal

Isotype: IgG

Purity: Immunogen affinity purified

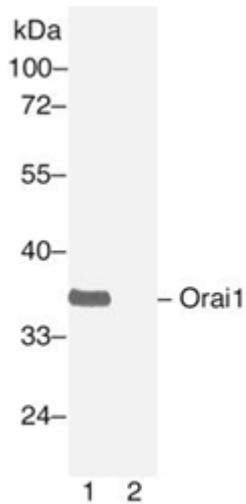
Preservative: 0.01% sodium azide

Constituents: 50mM NaHCO₃-Glycine, 0.15M NaCl,, pH7.4

Species Reactivity: Orail-L2 antibody recognizes Orail from human.

Storage Conditions: Store at -20°C. Avoid repeated freezing and thawing

Western blot:



Western blot analysis of Orail protein.

Human Orail plasmid DNA was transiently transfected into HEK-293 cells. Whole-cell lysate was used for western blot in the absence (A) or presence (B) of antigen peptide.