

CCN2 MAB (PAMREVLUMAB)

Cat.#: 28105

Product Name: Anti-CCN2(Pamrevlumab) Monoclonal Antibody

Synonyms: CTGF;HCS24;IGFBP8;NOV2

Description: Anti-CCN2(pamrevlumab) Monoclonal Antibody

Background: Research grade biosimilar. Not for use in therapeutic or diagnostic procedures for humans or animals.

Applications: Flow Cyt

Recommended Dilutions: Flow Cyt 1:100

Host Species: Homo sapiens

Isotype: IgG1

Purification: Purified from cell culture supernatant by affinity chromatography

Species Reactivity: Human CCN2

Constituents: Lyophilized from sterile PBS, pH 7.4. 5 % – 8% trehalose is added as protectants before lyophilization.

Storage & Shipping: Store at -20°C to -80°C for 12 months in lyophilized form. After reconstitution, if not intended for use within a month, aliquot and store at -80°C (Avoid repeated freezing and thawing).

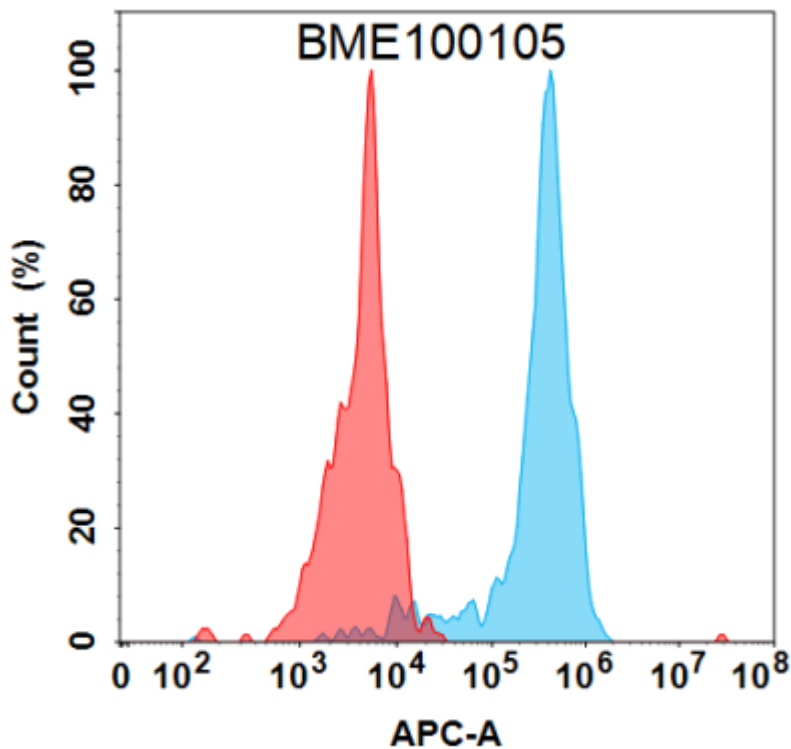


Figure 1. Flow cytometry analysis under cell membrane permeable condition with 1 µg/mL Anti-CCN2 (pamrevlumab biosimilar) mAb (28105) on Expi293 cells transfected with Human CCN2 protein (Blue histogram) or Expi293 transfected with irrelevant protein (Red histogram).