

## HER3 MAB (PATRITUMAB)

**Cat.#:** 28065

**Product Name:** Anti-HER3 (Patritumab) Monoclonal Antibody

**Synonyms:** HER3;ERBB3

**Description:** Anti-HER3 (patritumab biosimilar) Monoclonal Antibody

**Background:** Research grade biosimilar. Not for use in therapeutic or diagnostic procedures for humans or animals.

**Applications:** ELISA; Flow Cyt

**Recommended Dilutions:** ELISA 1:5000-10000; Flow Cyt 1:100

**Host Species:** Homo sapiens

**Isotype:** IgG1

**Purification:** Purified from cell culture supernatant by affinity chromatography

**Species Reactivity:** Human HER3

**Constituents:** Lyophilized from sterile PBS, pH 7.4. 5 % – 8% trehalose is added as protectants before lyophilization.

**Storage & Shipping:** Store at -20°C to -80°C for 12 months in lyophilized form. After reconstitution, if not intended for use within a month, aliquot and store at -80°C (Avoid repeated freezing and thawing).

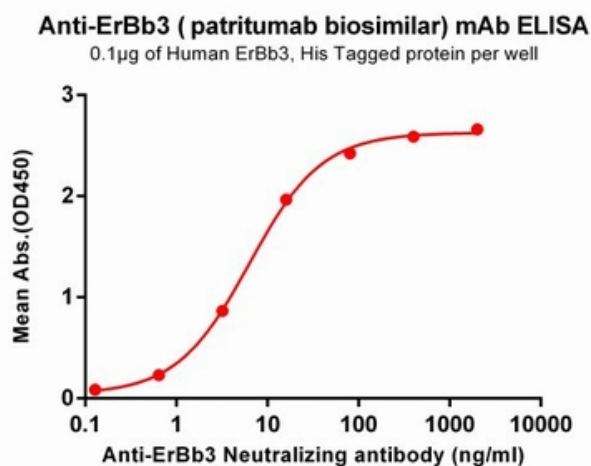


Figure 1. ELISA plate pre-coated by 1 µg/ml (100 µl/well) Human HER3 , His tagged protein 11208 can bind Anti-HER3 Neutralizing antibody (28065) in a linear range of 0.1-16 ng/ml.

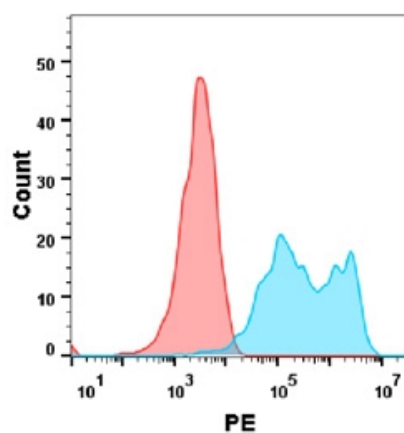


Figure 2. Flow cytometry analysis with Anti-HER3 mAb 1 µg/ml (patritumab) on Expi293 cells transfected with human HER3 (Blue histogram) or Expi293 transfected with irrelevant protein (Red histogram).