

PD-1 (DM177) RABBIT MAB

Cat.#: 28520

Product Name: Anti-PD-1(DM177) Rabbit Monoclonal Antibody

Synonyms: PDCD1; PDI; CD279; SLEB2

Description: Anti-PD-1 antibody(DM177) Rabbit Monoclonal Antibody

Background: This protein is expressed in pro-B-cells and is thought to play a role in their differentiation. In mice; expression of this gene is induced in the thymus when anti-CD3 antibodies are injected and large numbers of thymocytes undergo apoptosis. Mice deficient for this gene bred on a BALB:c background developed dilated cardiomyopathy and died from congestive heart failure. These studies suggest that this gene product may also be important in T cell function and contribute to the prevention of autoimmune diseases.

Applications: ELISA; Flow Cyt

Recommended Dilutions: ELISA 1:5000-10000; Flow Cyt 1:100

Host Species: Rabbit

Isotype: Rabbit IgG

Purification: Purified from cell culture supernatant by affinity chromatography

Species Reactivity: Human PD-1

Constituents: Lyophilized from sterile PBS, pH 7.4. 5 % – 8% trehalose is added as protectants before lyophilization.

Storage & Shipping: Store at -20°C to -80°C for 12 months in lyophilized form. After reconstitution, if not intended for use within a month, aliquot and store at -80°C (Avoid repeated freezing and thawing).

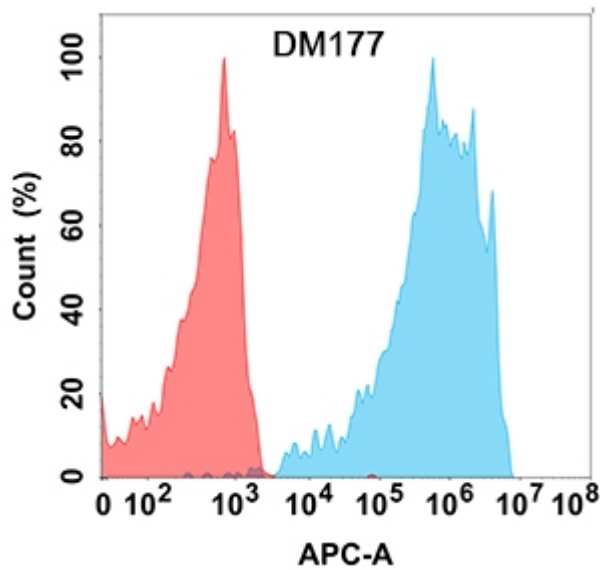


Figure 1. Flow cytometry analysis with Anti-PD-1 (DM177) on Expi293 cells transfected with human PD-1 (Blue histogram) or Expi293 transfected with irrelevant protein (Red histogram).