

PE-CONJUGATED ANTI-GPRC5D (DM91) RABBIT MAB

Cat.#: 28425

Product Name: PE-Conjugated Anti-GPRC5D(DM91) Rabbit Monoclonal Antibody

Synonyms: GPRC5D

Description: PE-conjugated Anti-GPRC5D antibody(DM91) Rabbit Monoclonal Antibody

Background: The protein encoded by this gene is a member of the G protein-coupled receptor family; however; the specific function of this gene has not yet been determined.

Applications: Flow Cyt

Recommended Dilutions: Flow Cyt 1:100

Host Species: Rabbit

Isotype: Rabbit IgG

Purification: Purified from cell culture supernatant by affinity chromatography

Species Reactivity: Human GPRC5D

Constituents: Lyophilized from sterile PBS, pH 7.4. 5 % – 8% trehalose is added as protectants before lyophilization.

Storage & Shipping: Store at -20°C to -80°C for 12 months in lyophilized form. After reconstitution, if not intended for use within a month, aliquot and store at -80°C (Avoid repeated freezing and thawing).

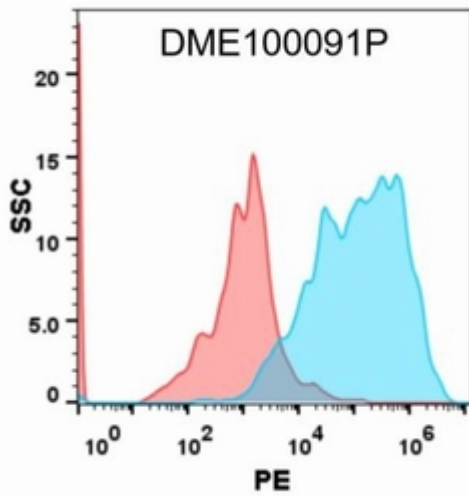


Figure 1. Flow cytometry analysis with 100 μ l of 1:100 dilution PE-conjugated Anti-GPRC5D(DM91) mAb (28425) on Expi293 cells transfected with Human GPRC5D protein (Blue histogram) or Expi293 transfected with irrelevant protein (Red histogram).