

PD-1 MAB (PEMBROLIZUMAB)

Cat.#: 28015

Product Name: Anti-PD-1 (Pembrolizumab) Monoclonal Antibody

Synonyms: PDCD1;PD1;CD279;SLEB2

Description: Anti-PD-1 (pembrolizumab) Monoclonal Antibody

Background: Research grade biosimilar. Not for use in therapeutic or diagnostic procedures for humans or animals.

Applications: ELISA; Flow Cyt

Recommended Dilutions: ELISA 1:5000-10000; Flow Cyt 1:100

Host Species: Humanized

Isotype: IgG4

Purification: Purified from cell culture supernatant by affinity chromatography

Species Reactivity: Human PD-1

Constituents: Lyophilized from sterile PBS, pH 7.4. 5 % – 8% trehalose is added as protectants before lyophilization.

Storage & Shipping: Store at -20°C to -80°C for 12 months in lyophilized form. After reconstitution, if not intended for use within a month, aliquot and store at -80°C (Avoid repeated freezing and thawing).

Anti-PD1 (pembrolizumab biosimilar) mAb ELISA

0.2 µg of Human PD1, mFc-His Tagged protein per well

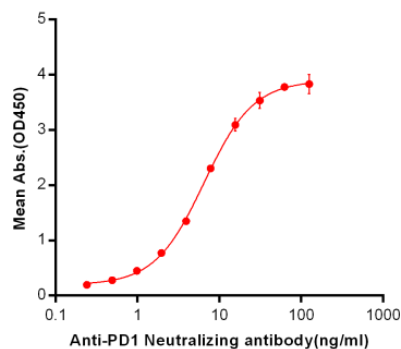


Figure 1. ELISA plate pre-coated by 2 µg/ml (100 µl/well) Human PD1, mFc-His tagged protein 11153 can bind Anti-PD-1 Neutralizing antibody in a linear range of 0.24-6.49 ng/ml.

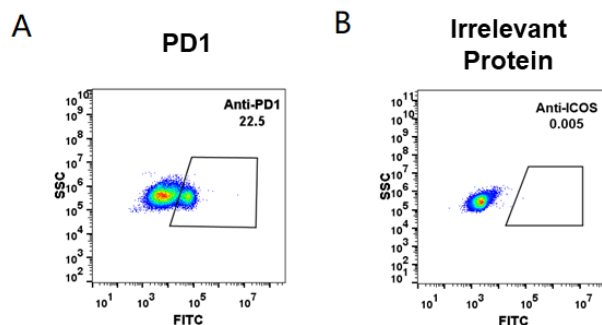


Figure 2. HEK293 cell line transfected with irrelevant protein (B) and human PD1 (A) were surface stained with anti-PD1 neutralizing antibody 1 µg/ml (pembrolizumab) followed by Alexa 488-conjugated anti-human IgG secondary antibody.