

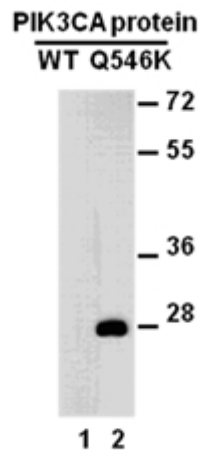
PIK3CA(Q546K)**PIK3CA(Q546K)****Cat. #:** 26138**Size:** 100 µL**Gene Symbol:** PIK3CA**Description:** Anti-PIK3CA(Q546K) Mouse Monoclonal Antibody**Background:** Phosphatidylinositol-4,5-bisphosphate 3-kinase catalytic subunit alpha isoform. Phosphorylates PtdIns, PtdIns4P and PtdIns(4,5)P2 with a preference for PtdIns(4,5)P2. Belongs to the PI3/PI4-kinase family. Located to cytosol, lamellipodium and phosphatidylinositol 3-kinase complex.**Immunogen:** A synthetic peptide from the internal region of PIK3CA(Q546K) of human origin.**Applications:** ELISA, WB, IHC**Recommended Dilutions:**

ELISA: 1:1000–1:5000

WB: 1:100–1:1000

IHC: 1:50–1:100

Concentration: 0.2 mg/ml**Host Species:** Mouse**Format:** Liquid**Clonality:** Monoclonal**Isotype:****Purity:** Purified from ascites**Preservative:** No**Constituents:** PBS (without Mg^{2+} and Ca^{2+}), pH 7.4, 150 mM NaCl, 50% glycerol**Species Reactivity:** recognizes Q546K mutant, but not wild type PIK3CA of vertebrates.**Storage Conditions:** Store at $-20^{\circ}C$. Avoid repeated freezing and thawing



Western blot: WB: anti-PIK3CA(Q546K) mAb

Western blot analysis of PIK3CA wild type and Q546K proteins. Equal amount of purified PIK3CA(Q546K)(amino acids 461-640) and corresponding wild type proteins were loaded and blotted with anti-PIK3CA(Q546K) mouse monoclonal antibody(Cat. # 26138).