

CCR2 MAB (PLOZALIZUMAB)

Cat.#: 28090

Product Name: Anti-CCR2(Plozalizumab) Monoclonal Antibody

Synonyms: CC-CKR-2;CCR2A;CCR2B;CD192;CKR2;CKR2A;CKR2B;CMKBR2;MCP-1-R

Description: Anti-CCR2(plozalizumab) Monoclonal Antibody

Background: Research grade biosimilar. Not for use in therapeutic or diagnostic procedures for humans or animals.

Applications: Flow Cyt

Recommended Dilutions: Flow Cyt 1:100

Host Species: Humanized

Isotype: IgG1

Purification: Purified from cell culture supernatant by affinity chromatography

Species Reactivity: Human CCR2

Constituents: Lyophilized from sterile PBS, pH 7.4. 5 % – 8% trehalose is added as protectants before lyophilization.

Storage & Shipping: Store at -20°C to -80°C for 12 months in lyophilized form. After reconstitution, if not intended for use within a month, aliquot and store at -80°C (Avoid repeated freezing and thawing).

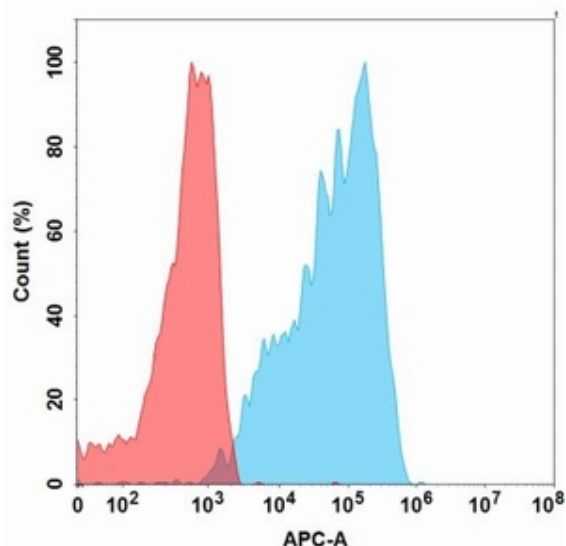


Figure 1. Flow cytometry analysis with 1 µg/mL Anti-CCR2 (plozalizumab biosimilar) mAb (28090) on Expi293 cells transfected with Human CCR2 protein (Blue histogram) or Expi293 transfected with irrelevant protein (Red histogram).