

PMEL (DMC420) IGG1 CHIMERIC MAB**Cat.#:** 28214**Product Name:** Anti-PMEL(DMC420) IgG1 Chimeric Monoclonal Antibody**Synonyms:** D12S53E; gp100; ME20; ME20-M; ME20M; P1; P100; PMEL17; SI; SIL; SILV**Description:** Anti-PMEL antibody(DMC420) IgG1 Chimeric Monoclonal Antibody**Background:** This gene encodes a melanocyte-specific type I transmembrane glycoprotein. The encoded protein is enriched in melanosomes; which are the melanin-producing organelles in melanocytes; and plays an essential role in the structural organization of premelanosomes. This protein is involved in generating internal matrix fibers that define the transition from Stage I to Stage II melanosomes. This protein undergoes a complex pattern of posttranslational processing and modification that is essential to the proper functioning of the protein. A secreted form of this protein that is released by proteolytic ectodomain shedding may be used as a melanoma-specific serum marker. Alternate splicing results in multiple transcript variants.**Applications:** Flow Cyt**Recommended Dilutions:** Flow Cyt 1:100**Host Species:** Rabbit**Isotype:** Rabbit:Human Fc chimeric IgG1**Purification:** Purified from cell culture supernatant by affinity chromatography**Species Reactivity:** Human PMEL**Constituents:** Lyophilized from sterile PBS, pH 7.4. 5 % – 8% trehalose is added as protectants before lyophilization.**Storage & Shipping:** Store at -20°C to -80°C for 12 months in lyophilized form. After reconstitution, if not intended for use within a month, aliquot and store at -80°C (Avoid repeated freezing and thawing).

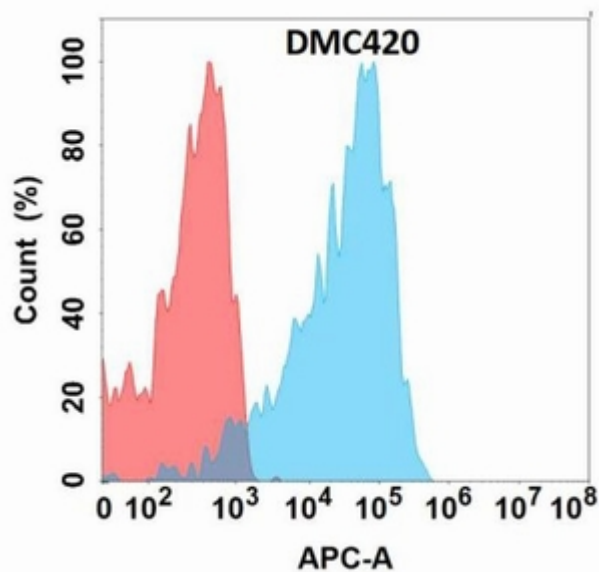


Figure 1. Flow cytometry analysis with Anti-PMEL (DMC420) on Expi293 cells transfected with human PMEL (Blue histogram) or Expi293 transfected with irrelevant protein (Red histogram).