

## **GDF15 MAB (PONSEGROMAB)**

**Cat.#:** 28093

**Product Name:** Anti-GDF15(Ponsegromab) Monoclonal Antibody

**Synonyms:** GDF-15;MIC-1;MIC1;NAG-1;PDF;PLAB;PTGFB

**Description:** Anti-GDF15(ponsegromab ) Monoclonal Antibody

**Background:** Research grade biosimilar. Not for use in therapeutic or diagnostic procedures for humans or animals.

**Applications:** Flow Cyt

**Recommended Dilutions:** Flow Cyt 1:100

**Host Species:** Humanized

**Isotype:** IgG1

**Purification:** Purified from cell culture supernatant by affinity chromatography

**Species Reactivity:** Human GDF15

**Constituents:** Lyophilized from sterile PBS, pH 7.4. 5 % – 8% trehalose is added as protectants before lyophilization.

**Storage & Shipping:** Store at -20°C to -80°C for 12 months in lyophilized form. After reconstitution, if not intended for use within a month, aliquot and store at -80°C (Avoid repeated freezing and thawing).

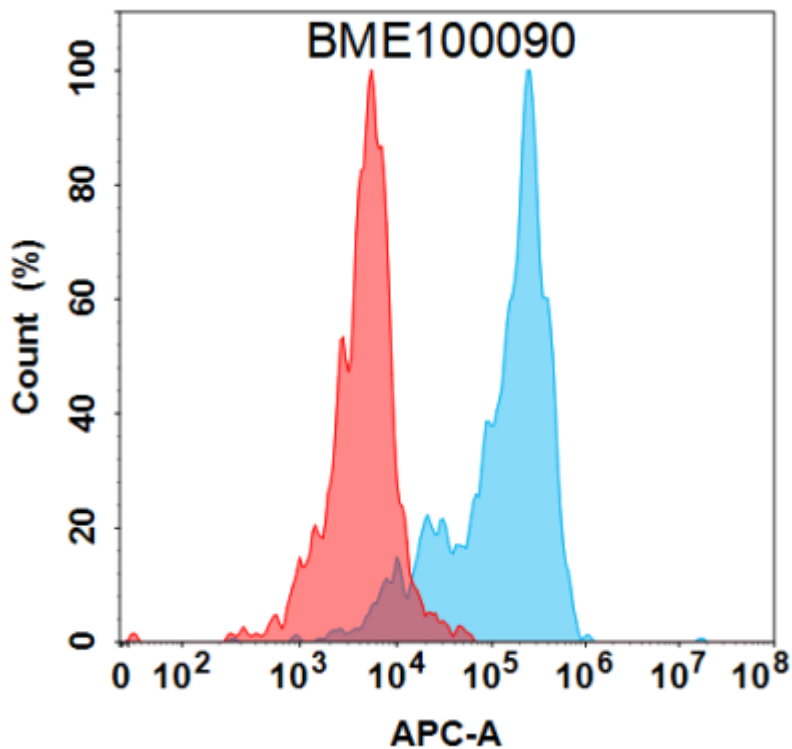


Figure 1. Flow cytometry analysis under cell membrane permeable condition with 1 µg/mL Anti-GDF15 (ponsegromab biosimilar) mAb (28093) on Expi293 cells transfected with Human GDF15 protein (Blue histogram) or Expi293 transfected with irrelevant protein (Red histogram).