

## CD166 MAB (PRALUZATAMAB)

**Cat.#:** 28163

**Product Name:** Anti-CD166(Praluzatamab) Monoclonal Antibody

**Synonyms:** ALCAM;MEMD

**Description:** Anti-CD166(praluzatamab ) Monoclonal Antibody

**Background:** Research grade biosimilar. Not for use in therapeutic or diagnostic procedures for humans or animals.

**Applications:** Flow Cyt

**Recommended Dilutions:** Flow Cyt 1:100

**Host Species:** Humanized

**Isotype:** IgG1

**Purification:** Purified from cell culture supernatant by affinity chromatography

**Species Reactivity:** Human CD166

**Constituents:** Lyophilized from sterile PBS, pH 7.4. 5 % – 8% trehalose is added as protectants before lyophilization.

**Storage & Shipping:** Store at -20°C to -80°C for 12 months in lyophilized form. After reconstitution, if not intended for use within a month, aliquot and store at -80°C (Avoid repeated freezing and thawing).

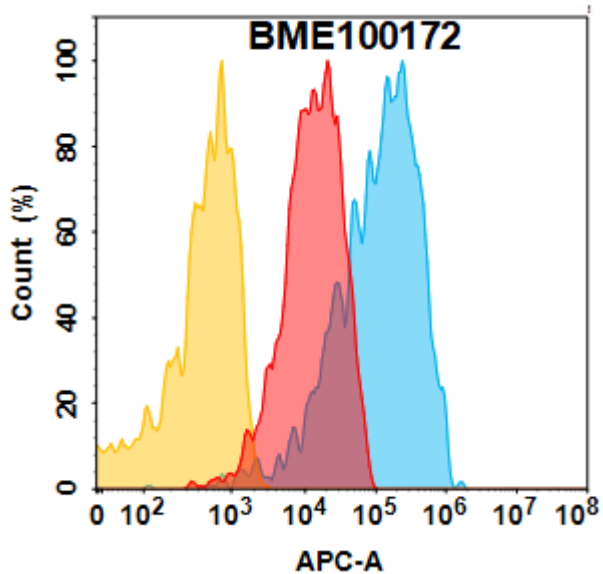


Figure 1. CD166 protein is highly expressed on the surface of Expi293 cell membrane. Flow cytometry analysis with 15 $\mu$ g/mL Anti-CD166(praluzatamab biosimilar) mAb (28163) on Expi293 cells transfected with Human CD166 (Blue histogram) or Expi293 transfected with irrelevant protein (Red histogram),and Isotype antibody on Expi293 transfected with irrelevant protein (Orange histogram)