

## PRLR (DMC462) IGG1 CHIMERIC MAB

**Cat.#:** 28238

**Product Name:** Anti-PRLR(DMC462) IgG1 Chimeric Monoclonal Antibody

**Synonyms:** Prolactin receptor; PRL-R

**Description:** Anti-PRLR antibody(DMC462) IgG1 Chimeric Monoclonal Antibody

**Background:** This gene encodes a receptor for the anterior pituitary hormone; prolactin; and belongs to the type I cytokine receptor family. Prolactin-dependent signaling occurs as the result of ligand-induced dimerization of the prolactin receptor. Several alternatively spliced transcript variants encoding different membrane-bound and soluble isoforms have been described for this gene; which may function to modulate the endocrine and autocrine effects of prolactin in normal tissue and cancer. [provided by RefSeq; Feb 2011]

**Applications:** Flow Cyt

**Recommended Dilutions:** Flow Cyt 1:100

**Host Species:** Rabbit

**Isotype:** Rabbit:Human Fc chimeric IgG1

**Purification:** Purified from cell culture supernatant by affinity chromatography

**Species Reactivity:** Human PRLR

**Constituents:** Lyophilized from sterile PBS, pH 7.4. 5 % – 8% trehalose is added as protectants before lyophilization.

**Storage & Shipping:** Store at -20°C to -80°C for 12 months in lyophilized form. After reconstitution, if not intended for use within a month, aliquot and store at -80°C (Avoid repeated freezing and thawing).

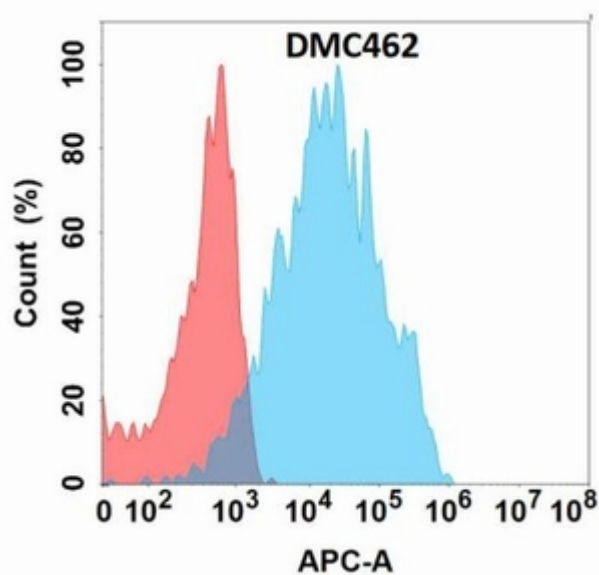


Figure 1. Flow cytometry analysis with Anti-PRLR (DMC462) on Expi293 cells transfected with human PRLR (Blue histogram) or Expi293 transfected with irrelevant protein (Red histogram).