

## PSCA (DM87) RABBIT MAB

**Cat.#:** 28415

**Product Name:** Anti-PSCA(DM87) Rabbit Monoclonal Antibody

**Synonyms:** PSCA;UNQ206;PRO232

**Description:** Anti-PSCA antibody(DM87) Rabbit Monoclonal Antibody

**Background:** This gene encodes a glycosylphosphatidylinositol-anchored cell membrane glycoprotein. In addition to being highly expressed in the prostate it is also expressed in the bladder; placenta; colon; kidney; and stomach. This gene is up-regulated in a large proportion of prostate cancers and is also detected in cancers of the bladder and pancreas. This gene includes a polymorphism that results in an upstream start codon in some individuals; this polymorphism is thought to be associated with a risk for certain gastric and bladder cancers. Alternative splicing results in multiple transcript variants.

**Applications:** ELISA; Flow Cyt

**Recommended Dilutions:** ELISA 1:5000-10000; Flow Cyt 1:100

**Host Species:** Rabbit

**Isotype:** Rabbit IgG

**Purification:** Purified from cell culture supernatant by affinity chromatography

**Species Reactivity:** Human PSCA

**Constituents:** Lyophilized from sterile PBS, pH 7.4. 5% - 8% trehalose is added as protectants before lyophilization.

**Storage & Shipping:** Store at -20°C to -80°C for 12 months in lyophilized form. After reconstitution, if not intended for use within a month, aliquot and store at -80°C (Avoid repeated freezing and thawing).

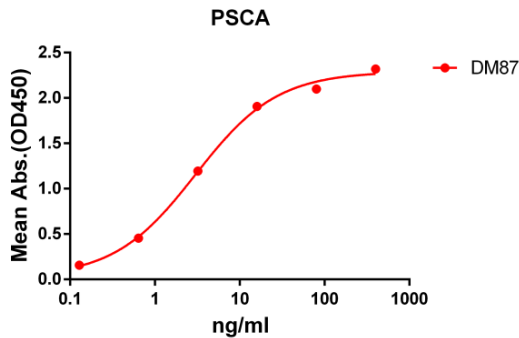


Figure 1. ELISA plate pre-coated by 2 µg/ml (100 ng/ml) Human PSCA protein, hFc tagged protein 11204 can bind Rabbit anti-PSCA monoclonal antibody (clone: DM87) in a linear range of 1-100 ng/ml.

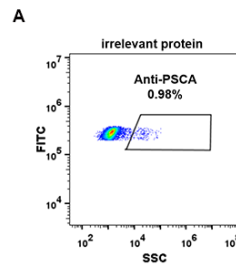


Figure 2. Expi 293 cell line transfected with irrelevant protein (A) and human PSCA (B) were surface stained with Rabbit anti-PSCA monoclonal antibody 1 µg/ml (clone: DM87) followed by Alexa 488-conjugated anti-rabbit IgG secondary antibody.