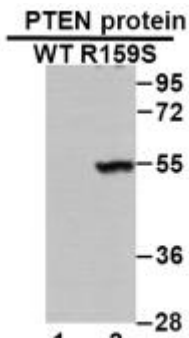


**PTEN(R159S)****PTEN (R159S)****Cat. #:** 26313**Gene Symbol:** PTEN, 10q23del, BZS, DEC, GLM2, MHAM, MMAC1, PTEN1, TEPI, MMAC1, PTEN1, TEPI**Description:** Anti-PTEN (R159S) Mouse Monoclonal Antibody**Background:** Phosphatase and tensin homolog (PTEN) was identified as a tumor suppressor that is mutated in a large number of cancers at high frequency. It is one of the most commonly lost tumor suppressors in human cancer. During tumor development, mutations and deletions of PTEN occur that inactivate its enzymatic activity leading to increased cell proliferation and reduced cell death. Frequent genetic inactivation of PTEN occurs in glioblastoma, endometrial cancer, and prostate cancer; and reduced expression is found in many other tumor types such as lung and breast cancer.**Immunogen:** A synthetic peptide from the internal region of PTEN which includes the mutation of R159S, human origin.**Tested applications:** ELISA, WB**Recommended dilutions:****ELISA:** 1:1000–1:5000**WB:** 1:500–1:1000**IHC:** 1:50–1:100**Concentration:** 1 mg/ml**Host Species:** Mouse**Clonality:** Monoclonal**Purity:** Purified from ascites**Format:** Liquid**Storage buffer:****Preservative:** no**Constituents:** PBS (without Mg<sup>2+</sup> and Ca<sup>2+</sup>), pH 7.4, 150 mM NaCl, 50% glycerol**Species Reactivity:** Recognizes EGFR (L747–P753) S, but not wild type EGFR protein from vertebrates.**Storage Conditions:** Store at –20°C. Avoid repeated freezing and thawing.**Western blot:**



WB: Anti- PTEN (R159S) mAb

Western blot analysis of recombinant PTEN (R159S) and wild type proteins. Purified His-tagged FGFR1 (R159S) protein (lane 2) and corresponding wild type protein (lane 1) were blotted with anti-PTEN (R159S) monoclonal antibody (Cat. #26313). Anti-PTEN (R159S) Mouse Monoclonal Antibody.