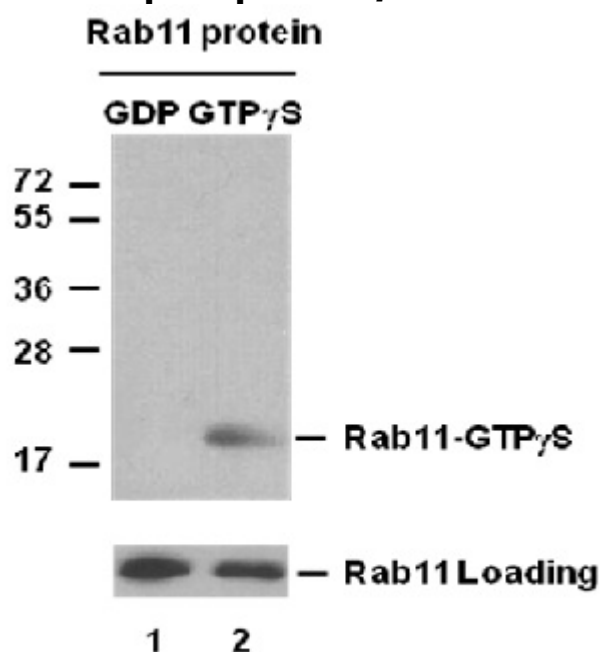


**RAB11-GTP****Anti-Rab11GTP Mouse Monoclonal Antibody****Cat. #:** 26919**Size:** 30  $\mu$ L**Gene Symbol:** RAB11**Description:** Anti-Rab11-GTP Mouse Monoclonal Antibody**Background:** Small GTPases of the Rab-family are crucial elements of the machinery that controls membrane traffic. Rab11 has been shown to control traffic through the recycling endosome.**Immunogen:** Recombinant full length protein of active Rab11**Applications:** IP, IHC and IF (**Not applicable for WB since SDS denatures Rab11 GTPase**)**Published Applications:** [IP, IHC and IF - Click for Details](#)**Recommended Dilutions:**IP: 1  $\mu$ g for 1~2 mg total cellular proteins

IHC, IF: 1:50~1:250

**Concentration:** 1 mg/ml**Host Species:** Mouse**Format:** Liquid**Clonality:** Monoclonal**Isotype:** IgG2b**Purity:** Purified from ascites**Preservative:** No**Constituents:** PBS (without  $Mg^{2+}$  and  $Ca^{2+}$ ), pH 7.4, 150 mM NaCl, 50% glycerol**Species Reactivity:** Anti-Rab11-GTP monoclonal antibody recognizes active Rab11 from vertebrates.**Storage Conditions:** Store at  $-20^{\circ}\text{C}$ . Avoid repeated freezing and thawing

## Immunoprecipitation/Western blot:



**IP:** anti-active Rab11 mAb

**IB:** anti-Rab11 pAb

## Rab11 Activation Assay.

Purified full-length Rab11 proteins were immunoprecipitated after treated with GDP (lane left) or GTP $\gamma$ S (lane right). Immunoprecipitation was done with the anti-Rab11-GTP monoclonal antibody (Cat. No. 26919). Immunoblot was with an anti-Rab5 polyclonal antibody (Cat. No. 21157).