

RAB11 MAB

Rab11 Monoclonal Antibody

Cat. #: 26030

Gene Symbol: RAB11

Description: Anti-Rab11 Mouse Monoclonal Antibody

Background: Small GTPases of the Rab-family are crucial elements of the machinery that controls membrane traffic. Rab11 has been shown to control traffic through the recycling endosome.

Immunogen: Recombinant full-length protein of Rab11A.

Applications: ELISA, WB, IHC, IP

Recommended Dilutions:

ELISA: 1:100–1:5000

WB: 1:100–1:1000

IHC: 1:50–1:100

Concentration: 1 mg/ml

Host Species: Mouse

Format: Liquid

Clonality: Monoclonal

Isotype: IgG

Purity: Purified from ascites

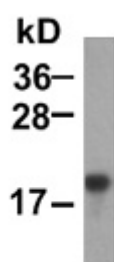
Preservative: No

Constituents: PBS (without Mg^{2+} and Ca^{2+}), pH 7.4, 150 mM NaCl, 50% glycerol

Species Reactivity: Rab11 antibody recognizes Rab11 proteins of vertebrates.

Storage Conditions: Store at $-20^{\circ}C$. Avoid repeated freezing and thawing

Western blot:



WB: anti-Rab11 mAb

Western blot analysis of recombinant Rab11A proteins (Cat# 26030).



Product Description

Pioneering GTPase and Oncogene Product Development since 2010
