

## RAB11 PAB

### Rab11 Polyclonal Antibody

**Cat. #:** 21157

**Gene Symbol:** RAB11

**Description:** Anti-Rab11 Rabbit Polyclonal Antibody

**Background:** Small GTPases of the Rab-family are crucial elements of the machinery that controls membrane traffic. Rab11 has been shown to control traffic through the recycling endosome. Immunogen: A synthetic peptide near the N-terminus of of human Rab11.

**Immunogen:** A synthetic peptide near the N-terminus of of human Rab11.

**Applications:** ELISA, WB, IHC,IP

**Recommended Dilutions:**

ELISA: 1:100–1:5000

WB: 1:100–1:1000

IHC: 1:100–1:1000

**Concentration:** 0.15 mg/ml

**Host Species:** Rabbit

**Format:** Liquid

**Clonality:** Polyclonal

**Isotype:** IgG

**Purity:** Purified from serum

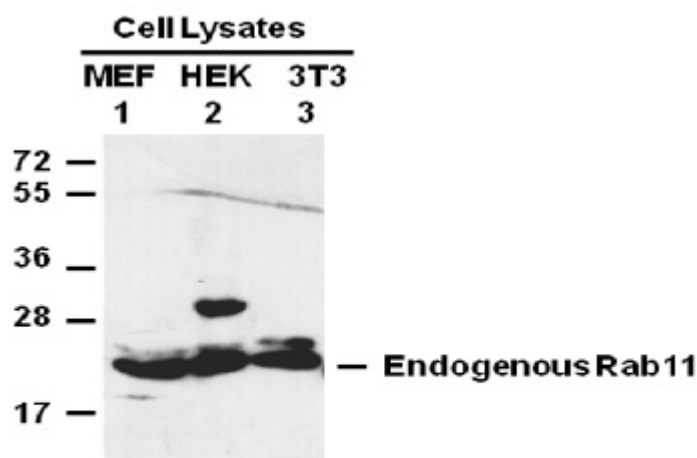
**Preservative:** No

**Constituents:** PBS (without  $Mg^{2+}$  and  $Ca^{2+}$ ), pH 7.4, 150 mM NaCl, 50% glycerol

**Species Reactivity:** Anti-Rab11 antibody recognizes Rab11 of vertebrates.

**Storage Conditions:** Store at  $-20^{\circ}C$ . Avoid repeated freezing and thawing

## Western blot:



WB: anti-Rab11BpAb

## Western blot analysis of Rab11 proteins.

Whole-cell lysates of MEF (lane 1), HEK293T (lane 2) and 3T3 (lane 3) cells were used for western blots with the anti Rab11 rabbit polyclonal antibody (Cat. # 21157).