

RAB12 PAB

Rab12 Polyclonal Antibody

Cat. #: 21076

Gene Symbol: RAB12

Description: Anti-Rab12 Rabbit Polyclonal Antibody

Background: Rab12 protein is a member of the Rab subfamily of Ras-related small GTPases. Rab12 might regulate vesicular trafficking.

Immunogen: A synthetic peptide from the internal region of Rab12

Applications: ELISA, WB, IHC, IP

Recommended Dilutions:

ELISA: 1:100–1:5000

WB: 1:200–1:2000

IHC: 1:10–1:100

Concentration: 0.2 mg/ml

Host Species: Rabbit

Format: Liquid

Clonality: Polyclonal

Isotype: IgG

Purity: Purified from serum

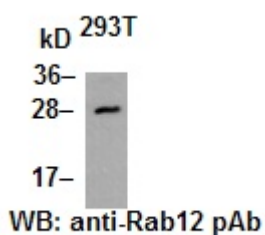
Preservative: No

Constituents: PBS (without Mg^{2+} and Ca^{2+}), pH 7.4, 150 mM NaCl, 50% glycerol

Species Reactivity: Rab12 antibody recognizes Rab12 from vertebrates.

Storage Conditions: Store at $-20^{\circ}C$. Avoid repeated freezing and thawing

Western blot:



HEK 293T cell lysate was used for Western blot with anti Rab12 polyclonal antibody (cat # 21076).



Product Description

Pioneering GTPase and Oncogene Product Development since 2010
