

## RAB13 PAB

### Rab13 Polyclonal Antibody

**Cat. #:** 21046

**Gene Symbol:** RAB13

**Description:** Anti-Rab13 Rabbit Polyclonal Antibody

**Background:** Rab GTPases are Ras-like small molecular weight GTP-binding proteins that are involved in various steps along the exocytic and endocytic pathways. Rab13 plays a critical role in regulating both the structure and function of tight junctions in polarized epithelial cells.

**Immunogen:** A synthetic peptide from the internal region of human Rab13 protein

**Applications:** ELISA, WB, IHC, IP

**Recommended Dilutions:**

ELISA: 1:100–1:5000

WB: 1:100–1:1000

IHC: 1:10–1:500

**Concentration:** 0.2 mg/ml

**Host Species:** Rabbit

**Format:** Liquid

**Clonality:** Polyclonal

**Isotype:** IgG

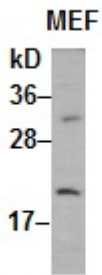
**Purity:** Purified from serum

**Preservative:** No

**Constituents:** PBS (without  $Mg^{2+}$  and  $Ca^{2+}$ ), pH 7.4, 150 mM NaCl, 50% glycerol

**Species Reactivity:** Rab13 antibody recognizes Rab13 proteins from vertebrates.

**Storage Conditions:** Store at  $-20^{\circ}C$ . Avoid repeated freezing and thawing



WB: anti-Rab13 pAb

MEF whole-cell lysate was used for Western blot with anti-Rab13 polyclonal antibody (cat # 21046).