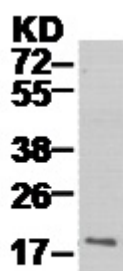


**RAB14 PAB****Rab14 Polyclonal Antibody****Cat. #:** 21047**Gene Symbol:** RAB14**Description:** Anti-Rab14 Rabbit Polyclonal Antibody**Background:** Small GTPase Rab14 localizes to the Golgi/TGN and to early endosomes, and is involved in the apical targeting pathway.**Immunogen:** A synthetic peptide from the C-terminal end of Rab14 protein.**Applications:** ELISA, WB, IHC**Recommended Dilutions:** ELISA 1:100–1:5000

WB 1:100–1:2000

IHC 1:100–1:1000

**Concentration:** 0.2 mg/ml**Host Species:** Rabbit**Format:** Liquid**Clonality:** Polyclonal**Isotype:** IgG**Purity:** Purified from serum**Preservative:** No**Constituents:** PBS (without  $Mg^{2+}$  and  $Ca^{2+}$ ), pH 7.4, 150 mM NaCl, 50% glycerol**Species Reactivity:** Rab14 antibody recognizes Rab14 from vertebrates.**Storage Conditions:** Store at  $-20^{\circ}C$ . Avoid repeated freezing and thawing**Western blot:****WB: anti-Rab14 pAb**

HepG cell lysate was used for Western blot with anti Rab14 polyclonal antibody (cat # 21047).

