

RAB17 PAB

Rab17 Polyclonal Antibody

Cat. #: 21049

Gene Symbol: RAB17

Description: Anti-Rab17 Rabbit Polyclonal Antibody

Background: The Rab-subfamily of small GTPases plays an important role in the regulation of membrane trafficking. Rab17 is an epithelial cell-specific GTPase, which is involved in transcellular transport.

Immunogen: A synthetic peptide from the C-terminal end of human Rab17 protein

Applications: ELISA, WB, IHC

Recommended Dilutions:

ELISA: 1:100–1:5000

WB: 1:100–1:2000

IHC: 1:100–1:1000

Concentration: 0.2 mg/ml

Host Species: Rabbit

Format: Liquid

Clonality: Polyclonal

Purity: Purified from serum

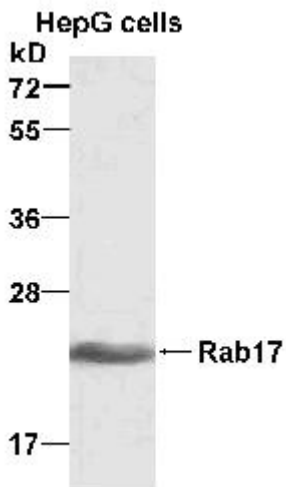
Preservative: No

Constituents: PBS (without Mg^{2+} and Ca^{2+}), pH 7.4, 150 mM NaCl, 50% glycerol

Species Reactivity: Rab17 antibody recognizes Rab17 from vertebrates.

Storage Conditions: Store at $-20^{\circ}C$. Avoid repeated freezing and thawing

Western blot:



WB: anti-Rab17 pAb

HepG whole-cell lysate was used for Western blot with anti Rab17 polyclonal antibody (cat # 21049).