

RAB25 PAB

Rab25 Polyclonal Antibody

Cat. #: 21056

Gene Symbol: RAB25

Description: Anti-Rab25 Rabbit Polyclonal Antibody

Background: Ras-related protein Rab25 is involved in recycling vesicles. It has been associated with the progression and aggressiveness of certain tumors.

Immunogen: A synthetic peptide from the internal region of human Rab25 protein

Applications: ELISA, WB, IHC

Recommended Dilutions: ELISA 1:100–1:5000

WB 1:100–1:1000

IHC 1:100–1:1000

Concentration: 0.2 mg/ml

Host Species: Rabbit

Format: Liquid

Clonality: Polyclonal

Isotype: IgG

Purity: Purified from serum

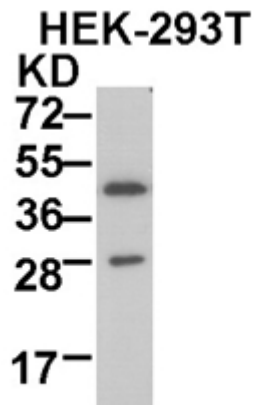
Preservative: No

Constituents: PBS (without Mg^{2+} and Ca^{2+}), pH 7.4, 150 mM NaCl, 50% glycerol

Species Reactivity: Rab25 antibody recognizes Rab25 proteins from vertebrates.

Storage Conditions: Store at $-20^{\circ}C$. Avoid repeated freezing and thawing

Western blot:



WB: anti-Rab25 pAb

HEK-293T whole-cell lysate was used for Western blot with anti Rab25 polyclonal antibody (cat # 21056).