

## RAB26 PAB

### Rab26 Polyclonal Antibody

**Cat. #:** 21058

**Gene Symbol:** RAB26

**Description:** Anti-Rab26 Rabbit Polyclonal Antibody

**Background:** Ras-related protein Rab26 plays a role in recruiting mature granules to the plasma membrane upon beta-adrenergic stimulation.

**Immunogen:** A synthetic peptide from the C-terminal of human Rab26 protein

**Applications:** ELISA, WB, IHC, IP

**Recommended Dilutions:**

ELISA: 1:100–1:5000

WB: 1:100–1:1000

IHC: 1:100–1:1000

**Concentration:** 0.2 mg/ml

**Host Species:** Rabbit

**Format:** Liquid

**Clonality:** Polyclonal

**Isotype:** IgG

**Purity:** Purified from serum

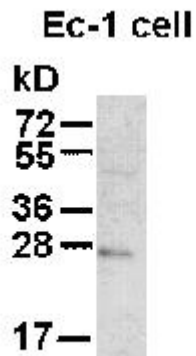
**Preservative:** No

**Constituents:** PBS (without  $Mg^{2+}$  and  $Ca^{2+}$ ), pH 7.4, 150 mM NaCl, 50% glycerol

**Species Reactivity:** Rab26 antibody recognizes Rab26 proteins from vertebrates.

**Storage Conditions:** Store at  $-20^{\circ}C$ . Avoid repeated freezing and thawing

## Western blot:



Wb: anti-Rab26 pAb

EC-1 whole-cell lysate was used for Western blot with anti Rab26 polyclonal antibody (cat # 21058).