

## RAB28 PAB

### Rab28 Polyclonal Antibody

**Cat. #:** 21061

**Gene Symbol:** RAB28

**Description:** Anti-Rab28 Rabbit Polyclonal Antibody

**Background:** Rab28 encodes a member of the Rab-subfamily of Ras-related small GTPases, and is involved in regulating intracellular trafficking.

**Immunogen:** A synthetic peptide from the C-terminal region of human Rab28

**Applications:** ELISA, WB, IHC, IP

**Recommended Dilutions:**

ELISA: 1:100–1:5000

WB: 1:100–1:1000

IHC: 1:100–1:1000

**Concentration:** 0.2 mg/ml

**Host Species:** Rabbit

**Format:** Liquid

**Clonality:** Polyclonal

**Isotype:** IgG

**Purity:** Purified from serum

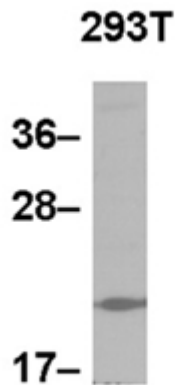
**Preservative:** No

**Constituents:** PBS (without  $Mg^{2+}$  and  $Ca^{2+}$ ), pH 7.4, 150 mM NaCl, 50% glycerol

**Species Reactivity:** Anti-Rab28 antibody recognizes Rab28 of vertebrates.

**Storage Conditions:** Store at  $-20^{\circ}C$ . Avoid repeated freezing and thawing

## Western blot:



## WB: anti-Rab28 pAb

Whole-cell lysate of HEK-293T cells was used for western blot with the polyclonal anti Rab28 antibody (Cat # 21061).