

RAB30 PAB**Rab30 Polyclonal Antibody****Cat. #:** 21062**Gene Symbol:** RAB30**Description:** Anti-Rab30 Rabbit Polyclonal Antibody**Background:** Rab30 is a member of the Ras-super-family small GTPases. Rab30 is involved in intracellular trafficking, and is localized in trans-Golgi.**Immunogen:** A synthetic peptide from the C-terminal of human Rab30 protein**Applications:** ELISA, WB, IHC, IP**Recommended Dilutions:**

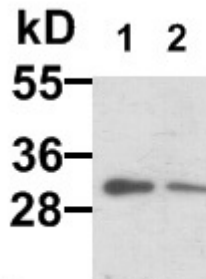
ELISA: 1:100–1:5000

WB: 1:100–1:1000

IHC: 1:100–1:1000

Concentration: 0.2 mg/ml**Host Species:** Rabbit**Format:** Liquid**Clonality:** Polyclonal**Isotype:** IgG**Purity:** Purified from serum**Preservative:** No**Constituents:** PBS (without Mg^{2+} and Ca^{2+}), pH 7.4, 150 mM NaCl, 50% glycerol**Species Reactivity:** Rab30 antibody recognizes Rab30 proteins from vertebrates.**Storage Conditions:** Store at -20°C . Avoid repeated freezing and thawing

Western blot:



WB:anti-Rab30 pAb

EC-1 (lane 1) and HepG2 (lane 2) whole-cell lysates were used for Western blots with anti Rab30 polyclonal antibody (cat # 21062).