

RAB31 PAB**Rab31 Polyclonal Antibody****Cat. #:** 21063**Gene Symbol:** RAB31**Description:** Anti-Rab31 Rabbit Polyclonal Antibody**Background:** Rab31 is a member of the Rab-subfamily of Ras-related small GTPases, and plays a role in the trans-Golgi network to endosome trafficking.**Immunogen:** A synthetic peptide from the C-terminal region of human Rab31**Applications:** ELISA, WB, IHC, IP**Recommended Dilutions:**

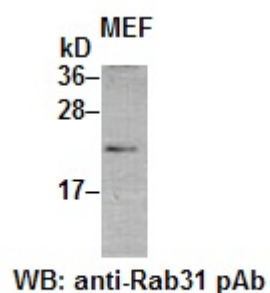
ELISA: 1:100–1:5000

WB: 1:200–1:2000

IHC: 1:10–1:500

Concentration: 0.2 mg/ml**Host Species:** Rabbit**Format:** Liquid**Clonality:** Polyclonal**Isotype:** IgG**Purity:** Purified from serum**Preservative:** No**Constituents:** PBS (without Mg^{2+} and Ca^{2+}), pH 7.4, 150 mM NaCl, 50% glycerol**Species Reactivity:** Rab31 antibody recognizes Rab31 from vertebrates.**Storage Conditions:** Store at $-20^{\circ}C$. Avoid repeated freezing and thawing

Western blot:



MEF cell lysate was used for Western blot with anti Rab31 polyclonal antibody (cat # 21063).