

RAB35-GTP**Anti-Rab35GTP Monoclonal Antibody****Cat. #:** 26922**Size:** 30 µL**Gene Symbol:** RAB35**Description:** Anti-Rab35-GTP Monoclonal Antibody

Background: The Rab family of GTPases regulates eukaryotic vesicular membrane traffic. Rab35 is with both plasma membrane and endosomal localization, and has been implicated in diverse processes that include T-cell receptor recycling, oocyte yolk protein recycling and cytokinesis. Rab35 regulates neurite outgrowth in neuronal-like cells, and can induce protrusions.

Immunogen: Recombinant full length protein of active Rab35

Applications: IP, IHC and IF (**Not applicable for WB since SDS denatures Rab35 GTPase**)

Recommended Dilutions:

IP: 1 µg for 1~2 mg total cellular proteins

IHC, IF: 1:50–1:250

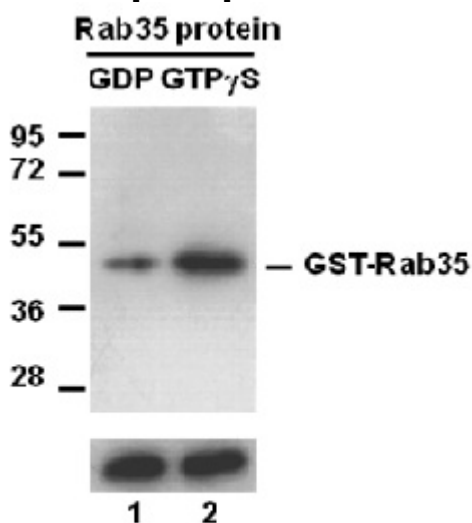
Concentration: 1 mg/ml**Host Species:** Mouse**Format:** Liquid**Clonality:** Monoclonal**Isotype:** IgG**Purity:** Purified from ascites**Preservative:** No

Constituents: PBS (without Mg²⁺ and Ca²⁺), pH 7.4, 150 mM NaCl, 50% glycerol

Species Reactivity: Anti-Rab35-GTP monoclonal antibody recognizes active Rab35 proteins of vertebrates.

Storage Conditions: Store at -20°C. Avoid repeated freezing and thawing

Immunoprecipitation/Western blot:



IP: anti-active Rab35 mAb

IB: anti-Rab35 pAb

Rab35 Activation Assay.

Purified full-length Rab35 proteins were immunoprecipitated after treated with GDP (lane 1) or GTP γ S (lane 2). Immunoprecipitation was done with the anti-Rab35-GTP monoclonal antibody (Cat. No. 26922). Immunoblot was with an anti-Rab35 polyclonal antibody (Cat. No. 21078).