

RAB35 PAB

Rab35 Polyclonal Antibody

Cat. #: 21078

Gene Symbol: RAB35

Description: Anti-Rab35 Rabbit Polyclonal Antibody

Background: The Rab family of GTPases regulates eukaryotic vesicular membrane traffic. Rab35 is with both plasma membrane and endosomal localization, and has been implicated in diverse processes that include T-cell receptor recycling, oocyte yolk protein recycling and cytokinesis. Rab35 regulates neurite outgrowth in neuronal-like cells, and can induce protrusions.

Immunogen: A synthetic peptide from the internal region of human Rab35 protein

Applications: ELISA, WB, IHC, IP

Recommended Dilutions:

ELISA: 1:100–1:5000

WB: 1:200–1:1000

IHC: 1:10–1:100

Concentration: 0.2 mg/ml

Host Species: Rabbit

Format: Liquid

Clonality: Polyclonal

Isotype: IgG

Purity: Purified from serum

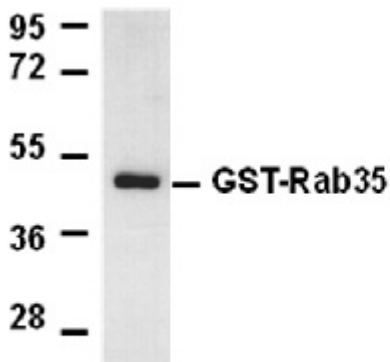
Preservative: No

Constituents: PBS (without Mg^{2+} and Ca^{2+}), pH 7.4, 150 mM NaCl, 50% glycerol

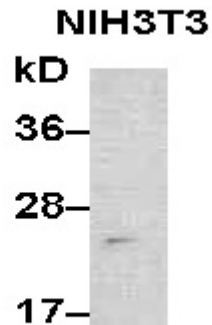
Species Reactivity: Rab35 antibody recognizes Rab35 proteins from vertebrates.

Storage Conditions: Store at $-20^{\circ}C$. Avoid repeated freezing and thawing

Western blot:



WB: anti-Rab35 pAb



WB: anti-Rab35 pAb

Purified recombinant GST-tagged Rab35 proteins (top panel, cat.# 10132) and NIH3T3 whole-cell lysate was used for Western blot with anti Rab35 polyclonal antibody (cat # 21078).