

RAB38 PAB

Rab38 Polyclonal Antibody

Cat. #: 21081

Gene Symbol: RAB38

Description: Anti-Rab38 Rabbit Polyclonal Antibody

Background: Rab38 is a small GTPase highly expressed in melanocytes. A point mutation in Rab38 has been identified as the genetic lesion responsible for oculocutaneous albinism in chocolate mice. Another point mutation that prevents translation of Rab38 mRNA is the molecular basis of the Ruby gene mutation causing the phenotype of oculocutaneous albinism and prolonged bleeding time in Fawn-Hooded and Tester-Moriyama rats.

Immunogen: A synthetic peptide from the internal region of human Rab38 protein

Applications: ELISA, WB, IHC, IP

Recommended Dilutions: ELISA 1:1000-1:5000

WB 1:100-1:1000

IHC 1:100-1:1000

Concentration:

Host Species: Rabbit

Format: Liquid

Z43Clonality: Polyclonal

Purity: Purified from serum

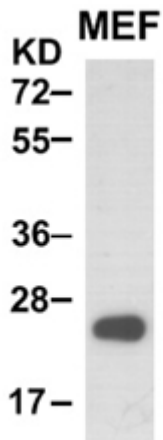
Preservative: No

Constituents: PBS (without Mg²⁺ and Ca²⁺), pH 7.4, 150 mM NaCl, 50% glycerol

Species Reactivity: : Rab38 antibody recognizes Rab38 proteins from vertebrates.

Storage Conditions: Store at -20°C. Avoid repeated freezing and thawing

Western blot:



WB: anti-Rab38 pAb

MEF whole-cell lysate was used for Western blot with anti Rab38 polyclonal antibody (cat # 21081).