

## RAB39 PAB

### Rab39 Polyclonal Antibody

**Cat. #:** 21082

**Gene Symbol:** RAB39

**Description:** Anti-Rab39 Rabbit Polyclonal Antibody

**Background:** Ras-related protein Rab39 is a Golgi-associated protein involved in endocytosis.

**Immunogen:** A synthetic peptide from the internal region of human Rab39 protein

**Applications:** ELISA, WB, IHC, IP

**Recommended Dilutions:**

ELISA: 1:100–1:5000

WB: 1:100–1:1000

IHC: 1:100–1:1000

**Concentration:** 0.2 mg/ml

**Host Species:** Rabbit

**Format:** Liquid

**Clonality:** Polyclonal

**Isotype:** IgG

**Purity:** Purified from serum

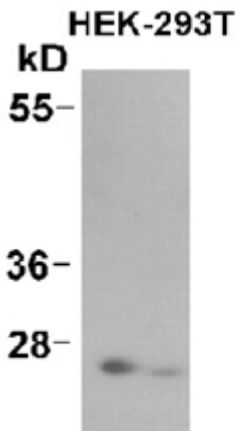
**Preservative:** No

**Constituents:** PBS (without  $Mg^{2+}$  and  $Ca^{2+}$ ), pH 7.4, 150 mM NaCl, 50% glycerol

**Species Reactivity:** Rab39 antibody recognizes Rab39 proteins from vertebrates.

**Storage Conditions:** Store at  $-20^{\circ}C$ . Avoid repeated freezing and thawing

## Western blot:



WB: anti-Rab39 pAb

HEK-293T whole-cell lysate was used for Western blot with anti Rab39 polyclonal antibody (cat # 21082).