

RAB3A MAB

RAB3A Monoclonal Antibody

Cat. #: 26031

Gene Symbol: RAB3A

Description: Anti-Rab3A Mouse Monoclonal Antibody

Background: Rab3A is a member of the Rab-family GTPases and is specifically targeted to synaptic vesicles.

Immunogen: Recombinant full length protein of Rab3A.

Applications: ELISA, WB, IHC, IP

Recommended Dilutions:

ELISA: 1:100–1:5000

WB: 1:100–1:2000

IHC: 1:100–1:1000

Concentration: 1 mg/ml

Host Species: Mouse

Format: Liquid

Clonality: Monoclonal

Isotype: IgG

Purity: Purified from ascites

Preservative: No

Constituents: PBS (without Mg²⁺ and Ca²⁺), pH 7.4, 150 mM NaCl, 50% glycerol

Species Reactivity: Rab3A antibody recognizes Rab3A of vertebrates.

Storage Conditions: Store at –20°C. Avoid repeated freezing and thawing

Immunoprecipitation/Western blot:

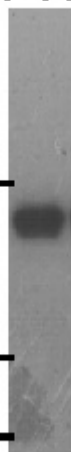
GST-Rab3A

kD

55 —

36 —

28 —



Wb:anti-Rab3A mAb

Western blot analysis of recombinant GST-Rab3A proteins.