

RAB3A PAB**Rab35 Polyclonal Antibody****Cat. #:** 21078**Gene Symbol:** RAB35**Description:** Anti-Rab35 Rabbit Polyclonal Antibody**Background:** The Rab family of GTPases regulates eukaryotic vesicular membrane traffic. Rab35 is with both plasma membrane and endosomal localization, and has been implicated in diverse processes that include T-cell receptor recycling, oocyte yolk protein recycling and cytokinesis. Rab35 regulates neurite outgrowth in neuronal-like cells, and can induce protrusions.**Immunogen:** A synthetic peptide from the internal region of human Rab35 protein**Applications:** ELISA, WB, IHC, IP**Recommended Dilutions:**

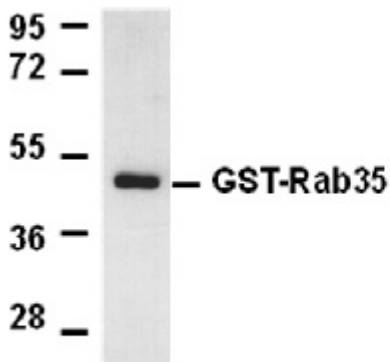
ELISA: 1:100–1:5000

WB: 1:200–1:1000

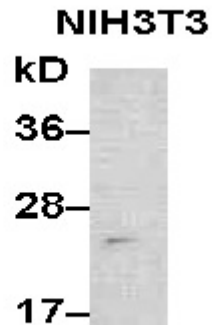
IHC: 1:10–1:100

Concentration: 0.2 mg/ml**Host Species:** Rabbit**Format:** Liquid**Clonality:** Polyclonal**Isotype:** IgG**Purity:** Purified from serum**Preservative:** No**Constituents:** PBS (without Mg²⁺ and Ca²⁺), pH 7.4, 150 mM NaCl, 50% glycerol**Species Reactivity:** Rab35 antibody recognizes Rab35 proteins from vertebrates.**Storage Conditions:** Store at –20°C. Avoid repeated freezing and thawing

Western blot:



WB: anti-Rab35 pAb



WB: anti-Rab35 pAb

Purified recombinant GST-tagged Rab35 proteins (top panel, cat.# 10132) and NIH3T3 whole-cell lysate was used for Western blot with anti Rab35 polyclonal antibody (cat # 21078).