

RAB3C PAB

Rab3C Polyclonal Antibody

Cat. #: 21043

Gene Symbol: RAB3C

Description: Anti-Rab3C Rabbit Polyclonal Antibody

Background: The Rab3 small G protein family consists of four members, Rab3A, -3B, -3C, and -3D. Rab3C is a small GTP-binding protein that associates with secretory granules of endocrine and exocrine cells. Rab3C is found in brain, adrenal gland and pituitary.

Immunogen: A synthetic peptide from the N-terminal region of human Rab3C

Applications: ELISA, WB, IHC

Recommended Dilutions:

ELISA: 1:100–1:5000

WB: 1:100–1:2000

IHC: 1:100–1:1000

Concentration: 0.2 mg/ml

Host Species: Rabbit

Format: Liquid

Clonality: Polyclonal

Purity: Purified from serum

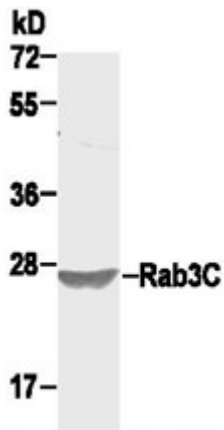
Preservative: No

Constituents: PBS (without Mg^{2+} and Ca^{2+}), pH 7.4, 150 mM NaCl, 50% glycerol

Species Reactivity: Rab3C antibody recognizes Rab3C from vertebrates.

Storage Conditions: Store at $-20^{\circ}C$. Avoid repeated freezing and thawing

Western blot:



WB: anti-Rab3C pAb

HepG cell lysate was used for Western blot with anti Rab3C polyclonal antibody (cat # 21043).