

RAB3D PAB

Rab3D Polyclonal Antibody

Cat. #: 21044

Gene Symbol: RAB3D

Description: Anti-Rab3D Rabbit Polyclonal Antibody

Background: Rab3D is a small GTP-binding protein that associates with secretory granules of endocrine and exocrine cells. Rab3D is involved in the biogenesis of secretory granules and also associates with early Golgi compartments.

Immunogen: A synthetic peptide from the C-terminal region of human Rab3D

Applications: ELISA, WB, IHC

Recommended Dilutions:

ELISA: 1:100–1:5000

WB: 1:100–1:2000

IHC: 1:100–1:1000

Concentration: 0.2 mg/ml

Host Species: Rabbit

Format: Liquid

Clonality: Polyclonal

Purity: Purified from serum

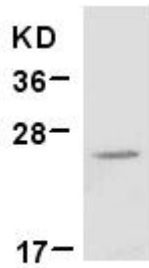
Preservative: No

Constituents: PBS (without Mg^{2+} and Ca^{2+}), pH 7.4, 150 mM NaCl, 50% glycerol

Species Reactivity: Rab3D antibody recognizes Rab3D from vertebrates.

Storage Conditions: Store at $-20^{\circ}C$. Avoid repeated freezing and thawing

Western blot:



WB: anti-Rab3D pAb

EC-1 cell lysate was used for Western blot with anti Rab3D polyclonal antibody (cat # 21044).