

## RAB41 PAB

### Rab41 Polyclonal Antibody

**Cat. #:** 21084

**Gene Symbol:** RAB41

**Description:** Anti-Rab41 Rabbit Polyclonal Antibody

**Background:** Rab GTPases are Ras-like small molecular weight GTP binding proteins that are involved in various steps along the exocytic and endocytic pathways. Rab41 is widely expressed in brain, testis, lung, heart, ovary, colon, kidney, uterus and spleen.

**Immunogen:** A synthetic peptide from the N-terminal region of human Rab41 protein

**Applications:** ELISA, WB, IHC, IP

**Recommended Dilutions:**

ELISA: 1:100–1:5000

WB: 1:200–1:1000

IHC: 1:10–1:500

**Concentration:** 0.2 mg/ml

**Host Species:** Rabbit

**Format:** Liquid

**Clonality:** Polyclonal

**Isotype:** IgG

**Purity:** Purified from serum

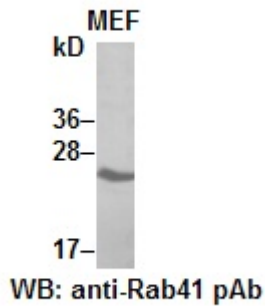
**Preservative:** No

**Constituents:** PBS (without  $Mg^{2+}$  and  $Ca^{2+}$ ), pH 7.4, 150 mM NaCl, 50% glycerol

**Species Reactivity:** Rab35 antibody recognizes Rab35 proteins from vertebrates.

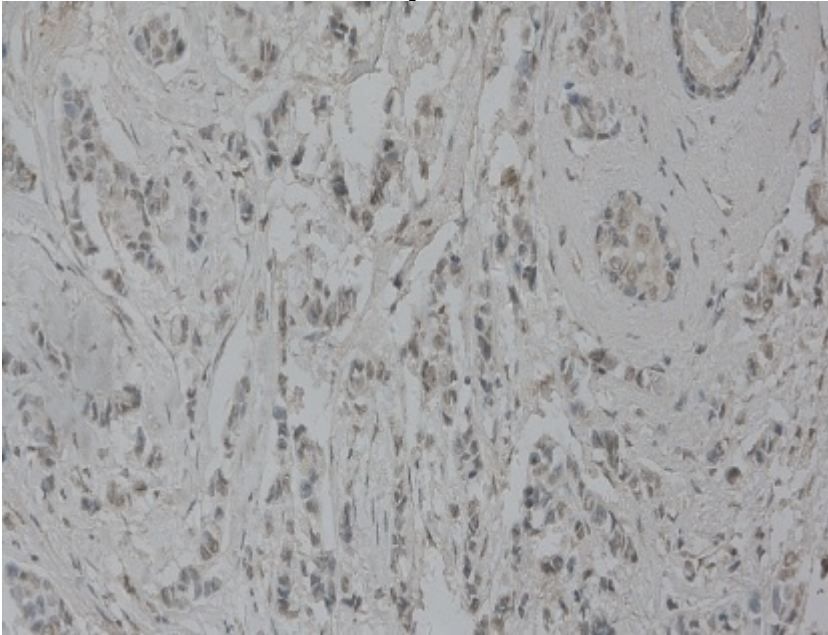
**Storage Conditions:** Store at  $-20^{\circ}C$ . Avoid repeated freezing and thawing

## Western blot:



MEF whole-cell lysate was used for Western blot with anti Rab41 polyclonal antibody (cat # 21084).

## Immunohistochemistry:



Immunohistochemical staining of formalin-fixed paraffin-embedded breast carcinoma using the affinity purified anti-Rab41 polyclonal antibody (Cat # 21084) with 1:50 dilution.