

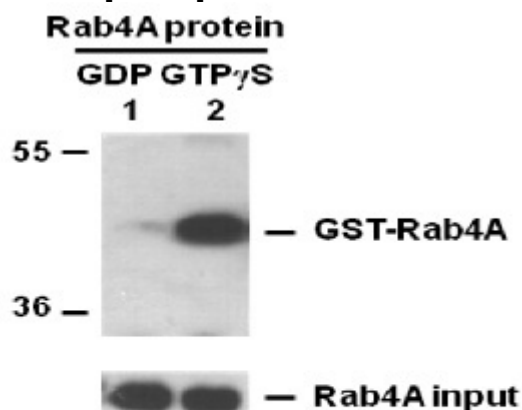
RAB4A-GTP**Anti-Rab4GTP Monoclonal Antibody****Cat. #:** 26921**Size:** 30 µL**Gene Symbol:** RAB4**Description:** Anti-Rab4-GTP Monoclonal Antibody**Background:** Rab-4 belongs to the small GTPase Rab family. It interacts with RAB11FIP1, RABEP1, ZFYVE20, RUFY1, SGSM1, SGSM2 and SGSM3. It participates in protein transport and in vesicular traffic.**Immunogen:** Recombinant full length protein of active Rab4A.**Applications:** IP, IHC and IF (**Not applicable for WB since SDS denatures Rab4 GTPase**)**Recommended Dilutions:**

IP: 1 µg for 1~2 mg total cellular proteins

IHC, IF: 1:50–1:250

Concentration: 1 mg/ml**Host Species:** Mouse**Format:** Liquid**Clonality:** Monoclonal**Isotype:** IgG**Purity:** Purified from ascites**Preservative:** No**Constituents:** PBS (without Mg²⁺ and Ca²⁺), pH 7.4, 150 mM NaCl, 50% glycerol**Species Reactivity:** Anti-Rab4-GTP monoclonal antibody recognizes active Rab4 from vertebrates.**Storage Conditions:** Store at -20°C. Avoid repeated freezing and thawing

Immunoprecipitation/Western blot:



IP: anti-active Rab4A mAb

IB: anti-Rab4A pAb

Rab4A Activation Assay.

Purified GST-tagged Rab4A proteins (Cat. #10130) were immunoprecipitated with the anti-Rab4-GTP monoclonal antibody (Cat. No. 26921) after treated with GDP (lane 1) or GTP γ S (lane 2), and was blotted with anti-Rab4A polyclonal antibody (Cat. No. 21067). Input control is shown in the bottom panel.