

RAB4A PAB**Rab4A Polyclonal Antibody****Cat. #:** 21158**Gene Symbol:** RAB4A**Description:** Anti-Rab4A Rabbit Polyclonal Antibody**Background:** Rab-4A belongs to the small GTPase Rab family. It interacts with RAB11FIP1, RABEP1, ZFYVE20, RUFY1, SGSM1, SGSM2 and SGSM3. It participates in protein transport and in vesicular traffic.**Immunogen:** Purified Rab4A protein.**Applications:** ELISA, WB, IHC, IP**Recommended Dilutions:**

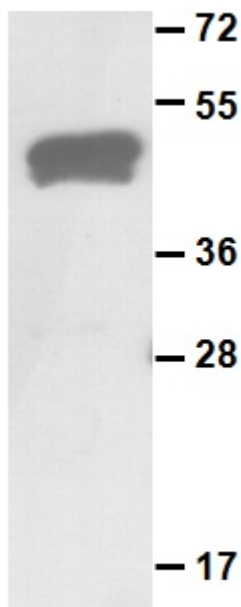
ELISA: 1:100–1:5000

WB: 1:100–1:2000

IHC: 1:10–1:100

Concentration: 0.15 mg/ml**Host Species:** Rabbit**Format:** Liquid**Clonality:** Polyclonal**Isotype:** IgG**Purity:** Purified from serum**Preservative:** No**Constituents:** PBS (without Mg^{2+} and Ca^{2+}), pH 7.4, 150 mM NaCl, 59% glycerol Species**Species Reactivity:** Rab4A antibody recognizes Rab4A proteins from vertebrates.**Storage Conditions:** Store at -20°C . Avoid repeated freezing and thawing

Immunoprecipitation/Western blot:



Purified GST-tagged Rab4A proteins (Cat. #10130) were used for Western blot with anti Rab4A polyclonal antibody (Cat. #21158).