

## RAB5 MAB

### Rab5

**Cat. #** 26016

**Gene Symbol:** RAB5

**Description:** Anti-Rab5 Mouse Monoclonal Antibody

**Background:** Rab5 is a member of Rab-family GTPases. Rab5 is a rate-limiting component of the machinery regulating the kinetics of membrane traffic in the early endocytic pathway.

**Immunogen:** Recombinant full length protein of Rab5A

**Applications:** ELISA, WB, IHC

**Recommended Dilutions:**

ELISA: 1:100–1:5000

WB: 1:100–1:2000

IHC: 1:50–1:100

**Concentration:** 1 mg/ml

**Host Species:** mouse

**Format:** Liquid

**Clonality:** Monoclonal

**Isotype:** IgG

**Purity:** Purified from ascites

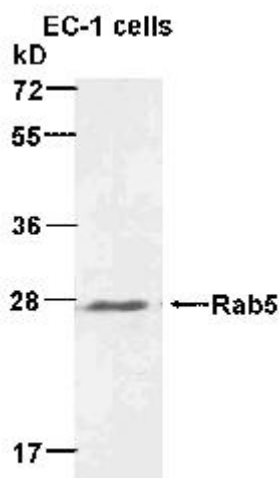
**Preservative:** no

**Constituents:** PBS (without  $Mg^{2+}$  and  $Ca^{2+}$ ), pH 7.4, 150 mM NaCl, 50% glycerol

**Species Reactivity:** Rab5 antibody recognizes Rab5 proteins of vertebrates.

**Storage Conditions:** Store at  $-20^{\circ}C$ . Avoid repeated freezing and thawing

## Western blot:



WB: anti-Rab5 MAb

**Western blot analysis of Rab5 proteins.** EC-1 whole-cell lysate was used for Western blot.