

RAB5 PAB

Rab5 Polyclonal Antibody

Cat. #: 21151

Gene Symbol: RAB5

Description: Anti-Rab5 Rabbit Polyclonal Antibody

Background: Rab5, consists of three isoforms, Rab5A, Rab5B, and Rab5C, is a small GTPase that is localized to early endosomes. It regulates the fusion between endocytic vesicles and early endosomes, as well as the homotypic fusion between early endosomes.

Immunogen: Three synthetic peptides from the internal region of human Rab5A, Rab5B and Rab5C proteins, respectively

Applications: ELISA, WB, IHC, IP

Recommended Dilutions:

ELISA: 1:100–1:5000

WB: 1:100–1:2000

IHC: 1:100–1:1000

Concentration: 0.2 mg/ml

Host Species: Rabbit

Format: Liquid

Clonality: Polyclonal

Isotype: IgG

Purity: Purified from serum

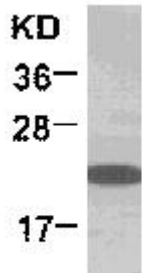
Preservative: No

Constituents: PBS (without Mg^{2+} and Ca^{2+}), pH 7.4, 150 mM NaCl, 50% glycerol

Species Reactivity: Rab5 antibody recognizes Rab5A, Rab5B and Rab5C from vertebrates.

Storage Conditions: Store at $-20^{\circ}C$. Avoid repeated freezing and thawing

Western blot:



WB: anti-Rab5 pAb

EC-1 whole-cell lysate was used for Western blot with anti Rab9A polyclonal antibody (cat # 21073).